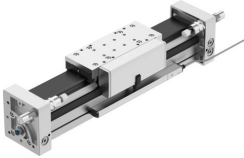


Linear drive DGCI-63- -

Part number: 544429

FESTO



Data sheet

Feature	Value
Stroke	100 mm...2000 mm
Stroke Servopneumatic positioning	100 mm...2000 mm
Stroke Smart Softstop	100 mm...2000 mm
Stroke reduction at end positions	35 mm
Smallest positioning stroke	3% of max. stroke Max. 20 mm
Piston diameter	63 mm
Cushioning	Shock absorber, hard characteristic curve Shock absorber, soft characteristic curve
Mounting position	optional
Guide	Recirculating ball bearing guide
Position detection	Via attached displacement encoder
Variants	Additional slide, standard, on left Additional slide, standard, on right
Operating pressure	0.15 MPa...0.8 MPa 1.5 bar...8 bar 21.75 psi...116 psi
Mode of operation	Double-acting
Approval	RCM trademark
CE mark (see declaration of conformity)	To EU EMC Directive To EU Explosion Protection Directive (ATEX) In accordance with EU RoHS Directive
UKCA marking (see declaration of conformity)	To UK instructions for EMC To UK EX instructions To UK RoHS instructions
Explosion protection certification outside the EU	EPL Dc (GB) EPL Gc (GB)
Explosion protection	Zone 2 (ATEX) Zone 2 (UKEX) Zone 22 (ATEX) Zone 22 (UKEX)
ATEX category gas	II 3G
ATEX category dust	II 3D
Explosion ignition protection type for gas	Ex ec IIC T4 Gc X
Explosion ignition protection type for dust	Ex tc IIIC T120°C Dc X

Feature	Value
Explosion ambient temperature	0 °C ≤ Ta ≤ +50 °C
Operating medium	Compressed air to ISO 8573-1:2010 [6:4:4]
Note on operating and pilot medium	Lubricated operation not possible
Corrosion resistance class CRC	1 - Low corrosion stress 2 - Moderate corrosion stress
LABS (PWIS) conformity	VDMA24364-B1/B2-L
Suitable for use with food	See supplementary material information
Ambient temperature	-10 °C...60 °C
Theoretical force at 0.6 MPa (6 bar, 87 psi), return stroke	1870 N
Theoretical force at 0.6 MPa (6 bar, 87 psi), advance stroke	1870 N
alternative connections	See product drawing
Type of mounting	With accessories
Pneumatic connection	G3/8
Material cover	Wrought aluminium alloy
Material seals	NBR TPE-U(PU)