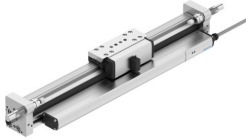


# Linear drive DGCI-18- -

Part number: 544425

**FESTO**



## Data sheet

| Feature   | Value   |
|---|---|
| Stroke  | 100 mm...2000 mm  |
| Stroke Servopneumatic positioning                 | 100 mm...2000 mm  |
| Stroke Smart Softstop                             | 100 mm...2000 mm  |
| Stroke reduction at end positions                 | 20 mm   |
| Smallest positioning stroke                       | 3% of max. stroke<br>Max. 20 mm   |
| Piston diameter                                   | 18 mm   |
| Cushioning  | Shock absorber, hard characteristic curve<br>Shock absorber, soft characteristic curve                                    |
| Mounting position                                 | optional  |
| Guide   | Recirculating ball bearing guide  |
| Position detection                                | Via attached displacement encoder   |
| Variants  | Protected recirculating ball bearing guide<br>Additional slide, standard, on left<br>Additional slide, standard, on right |
| Operating pressure                                | 0.2 MPa...0.8 MPa<br>2 bar...8 bar<br>29 psi...116 psi  |
| Mode of operation                                 | Double-acting   |
| Approval  | RCM trademark   |
| CE mark (see declaration of conformity)           | To EU EMC Directive<br>To EU Explosion Protection Directive (ATEX)<br>In accordance with EU RoHS Directive                |
| UKCA marking (see declaration of conformity)      | To UK instructions for EMC<br>To UK EX instructions<br>To UK RoHS instructions  |
| Explosion protection certification outside the EU | EPL Dc (GB)<br>EPL Gc (GB)  |
| Explosion protection                              | Zone 2 (ATEX)<br>Zone 2 (UKEX)<br>Zone 22 (ATEX)<br>Zone 22 (UKEX)  |
| ATEX category gas                                 | II 3G   |
| ATEX category dust                                | II 3D   |
| Explosion ignition protection type for gas        | Ex ec IIC T4 Gc X   |

| Feature  | Value   |
|--|---|
| Explosion ignition protection type for dust                  | Ex tc IIIC T120°C Dc X                                    |
| Explosion ambient temperature                                | 0 °C ≤ Ta ≤ +50 °C  |
| Operating medium   | Compressed air to ISO 8573-1:2010 [6:4:4]                 |
| Note on operating and pilot medium                           | Lubricated operation not possible                         |
| Corrosion resistance class CRC                               | 1 - Low corrosion stress<br>2 - Moderate corrosion stress |
| LABS (PWIS) conformity                                       | VDMA24364-B1/B2-L   |
| Suitable for use with food                                   | See supplementary material information                    |
| Ambient temperature  | -10 °C...60 °C  |
| Theoretical force at 0.6 MPa (6 bar, 87 psi), return stroke  | 153 N   |
| Theoretical force at 0.6 MPa (6 bar, 87 psi), advance stroke | 153 N   |
| alternative connections                                      | See product drawing                                       |
| Type of mounting   | With accessories  |
| Pneumatic connection   | M5  |
| Material cover   | Wrought aluminium alloy                                   |
| Material seals   | NBR<br>TPE-U(PU)  |