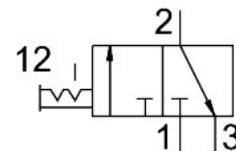


# On/off valve MS4N-EM1-1/8-S-Z

Part number: 541286

FESTO



## Data sheet

Feature	Value
Design	Rotary gate valve
Type of actuation	Manual
Exhaust-air function	Without flow control option
Type of piloting	Direct
Valve function	3/2 double solenoid
Operating pressure	0 MPa...1.4 MPa 0 bar...14 bar
C value	4.6 l/sbar
b value	0.51
Standard nominal flow rate (standardised to DIN 1343)	1200 l/min
Operating medium	Compressed air to ISO 8573-1:2010 [7:4:4] Inert gases
Note on operating and pilot medium	Lubricated operation possible (in which case lubricated operation will always be required)
Corrosion resistance class CRC	2 - Moderate corrosion stress
Note on materials	RoHS-compliant
LABS (PWIS) conformity	VDMA24364-B1/B2-L
Media temperature	-10 °C...60 °C
Ambient temperature	-10 °C...60 °C
Suitable for use with food	See supplementary material information
Type of mounting	In-line installation With accessories Either:
Mounting position	optional
Flow direction	Non-reversible
Product weight	210 g
Pneumatic connection, port 1	1/8 NPT
Pneumatic connection, port 2	1/8 NPT
Pneumatic connection, port 3	Not ducted
Material seals	TPE-U(PU)
Material housing	Die-cast aluminium