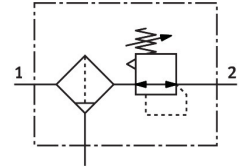


Filter regulator PCRP-64-N12-12-E-R1-M-T19

Part number: 5394676

FESTO



Data sheet

Feature	Value
Size	64
Series	P
Actuator lock	Adjusting screw with lock
Mounting position	Vertical +/- 5°
Grade of filtration	40 µm
Condensate drain	Manually rotating
Design	Filter regulator without pressure gauge
Conforms to standard	NACE MR0175/ISO 15156 (housing and bowl)
Max. condensate volume	30 cm³
Controller function	Via primary pressure compensation With secondary venting
Pressure gauge (ANALOG) or Pressure display (DIGITAL)	Prepared for G1/4
Operating pressure	0.1 MPa...2 MPa 1 bar...20 bar
Pressure regulation range	0.5 bar...12 bar
Max. pressure hysteresis	0.2 bar
Max. standard flow rate	6440 l/min
Standard nominal flow rate (standardised to DIN 1343)	3100 l/min
Explosion protection	The information in the certificate must be observed! Zone 1 (ATEX) Zone 2 (ATEX) Zone 21 (ATEX) Zone 22 (ATEX)
Operating medium	Compressed air to ISO 8573-1:2010 [-:4:-] Inert gases
Note on operating and pilot medium	Lubricated operation possible (in which case lubricated operation will always be required)
LABS (PWIS) conformity	VDMA24364 zone III
Storage temperature	-60 °C...80 °C
Air purity class at output	Compressed air to ISO 8573-1:2010 [7:4:4]
Media temperature	-60 °C...80 °C
Ambient temperature	-60 °C...80 °C
Product weight	1910 g

Feature	Value
Type of mounting	In-line installation Via mounting kit Either:
Pressure gauge connection	G1/4
Pneumatic connection, port 1	NPT1/2-14
Pneumatic connection, port 2	NPT1/2-14
Material of drain screw	High-alloy stainless steel
Material number of drain screw	1.4404/316L
Material filter carrier	Stainless steel casting
Material number of filter support	1.4409/CF3M(316L)
Note on materials	RoHS-compliant
Material mounting bracket	High-alloy stainless steel
Material seals	CR NBR VMQ
Material spring	High-alloy stainless steel
Material filter	High-alloy stainless steel
Material number of filter	1.4404/316L
Material housing	Stainless steel casting
Material number housing	1.4409/CF3M(316L)
Material adjusting screw	High-alloy stainless steel
Material bowl	Stainless steel casting
Material number of bowl	1.4409/CF3M (316L)