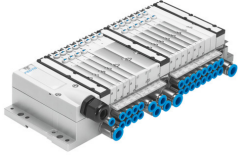


Valve terminal MPA-MPM-VI

Part number: 539105

FESTO



Data sheet

Feature	Value
Electrical control	Multi-pin plug
Terminal type	32
Operating medium	Compressed air to ISO 8573-1:2010 [7:4:4]
Note on operating and pilot medium	Lubricated operation possible (in which case lubricated operation will always be required)
Media temperature	-5 °C...50 °C
Ambient temperature	-5 °C...50 °C
Storage temperature	-20 °C...40 °C
Relative air humidity	Max. 90% at 40°C
Degree of protection	IP67
Corrosion resistance class CRC	1 - Low corrosion stress
Operating pressure	-0.09 MPa...1 MPa -0.9 bar...10 bar
Pilot pressure	0.3 MPa...0.8 MPa 3 bar...8 bar
LABS (PWIS) conformity	VDMA24364-B1/B2-L
CE mark (see declaration of conformity)	To EU EMC Directive In accordance with EU RoHS Directive
UKCA marking (see declaration of conformity)	To UK instructions for EMC To UK EX instructions To UK RoHS instructions
KC mark	KC-EMV
Approval	RCM trademark c UL us - Recognized (OL)
Explosion protection	Zone 1 (UKEX) Zone 2 (ATEX) Zone 21 (UKEX)
ATEX category gas	II 3G
Explosion protection certification outside the EU	EPL Db (GB) EPL Gb (GB)
Explosion ignition protection type for gas	Ex ec IIC T4 Gc X
Explosion ambient temperature	-5 °C ≤ Ta ≤ +50 °C
Note on materials	RoHS-compliant
Valve terminal structure	Modular, valve sizes can be mixed

Feature	Value
Max. number of valve positions	24
Max. number of pressure zones	7
Type of actuation	Electric
Valve function	2/2-way, closed, monostable 2x3/2-way, monostable, closed 2x3/2-way, open, monostable 2x3/2-way, open/closed, monostable 3/2-way, closed, monostable 3/2 open, single solenoid 5/2 double solenoid 5/2-way, monostable 5/3-way, pressurised 5/3 exhausted 5/3 closed
Design	Piston gate valve Poppet valve with spring return
Valve size	10 mm 14 mm 20 mm
Pilot air supply	External Internal
Max. standard nominal flow rate	360 l/min at 10 mm 550 l/min at 14 mm 700 l/min at 20 mm
Suitability for vacuum	yes
pneumatic working port	M7 G1/8 QS-4 QS-6 QS-8 QS-3/16 QS-1/4 QS-5/16
Signal status display	LED
Nominal operating voltage DC	24 V
Permissible voltage fluctuations	+/- 25%