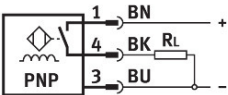
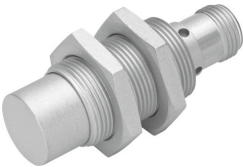


# Proximity sensor SIEF-M18B-PS-S-L-WA

Part number: 538301

FESTO



## Data sheet

| Feature                                 | Value  |
|---|--|
| Design                                  | Round  |
| Conforms to standard                    | EN 60947-5-2   |
| Approval                                | RCM trademark<br>c UL us listed (OL)   |
| CE mark (see declaration of conformity) | To EU EMC Directive  |
| Measuring principle                     | Inductive  |
| Rated operating distance                | 5 mm   |
| Assured operating distance              | 4.05 mm  |
| Reduction factors                       | Aluminium = 1.0<br>Stainless steel St 18/8 = 1.0<br>Copper = 1.0<br>Brass = 1.0<br>Steel St 37 = 1.0 |
| Ambient temperature                     | -30 °C...85 °C   |
| Repetition accuracy                     | 0.1 mm   |
| Switching output                        | PNP  |
| Switching element function              | N/O contact  |
| Hysteresis                              | 0.15 mm...0.75 mm  |
| Max. switching frequency DC             | 2500 Hz  |
| Max. output current                     | 200 mA   |
| Voltage drop                            | 1.8 V  |
| Short circuit current rating            | Pulsed   |
| Operational voltage range DC            | 10 V...30 V  |
| Residual ripple                         | 10 %   |
| No-load supply current                  | 15 mA  |
| Reverse polarity protection             | For all electrical connections   |
| Electrical connection                   | 3-pin<br>Fixcon<br>M12x1<br>Plugs  |
| Size                                    | M18  |
| Type of mounting                        | Via lock nut   |
| Tightening torque                       | 15 Nm  |
| Mounting type                           | Flush  |

| Feature                                     | Value  |
|---|--|
| Product weight                              | 48 g   |
| Material housing                            | Brass<br>PBT<br>PTFE coated                      |
| Switching status indication                 | Yellow LED                                       |
| Degree of protection                        | IP67   |
| Immunity to magnetic fields                 | Magnetic direct and alternating field            |
| Corrosion resistance class CRC              | 0 - No corrosion stress                          |
| Additional information for sensor selection | Reduction factor 1, resistant to magnetic fields |
| Electrical output                           | PNP  |
| Selection of sensor design                  | Resistant to welding spatter                     |