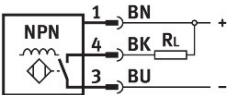
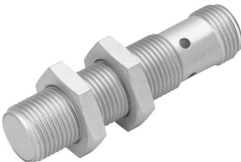


Proximity sensor SIEF-M12B-NS-S-L-WA

Part number: 538298

FESTO



Data sheet

Feature	Value
Design	Round
Conforms to standard	EN 60947-5-2
Approval	RCM trademark c UL us listed (OL)
CE mark (see declaration of conformity)	To EU EMC Directive
Measuring principle	Inductive
Rated operating distance	3 mm
Assured operating distance	2.43 mm
Reduction factors	Aluminium = 1.0 Stainless steel St 18/8 = 1.0 Copper = 1.0 Brass = 1.0 Steel St 37 = 1.0
Ambient temperature	-30 °C...85 °C
Repetition accuracy	0.06 mm
Switching output	NPN
Switching element function	N/O contact
Hysteresis	0.09 mm...0.45 mm
Max. switching frequency DC	3000 Hz
Max. output current	200 mA
Voltage drop	1.8 V
Short circuit current rating	Pulsed
Operational voltage range DC	10 V...30 V
Residual ripple	10 %
No-load supply current	15 mA
Reverse polarity protection	For all electrical connections
Electrical connection	3-pin Fixcon M12x1 Plugs
Size	M12
Type of mounting	Via lock nut
Tightening torque	7 Nm
Mounting type	Flush

Feature	Value
Product weight	26 g
Material housing	Brass PBT PTFE coated
Switching status indication	Yellow LED
Degree of protection	IP67
Immunity to magnetic fields	Magnetic direct and alternating field
Corrosion resistance class CRC	0 - No corrosion stress
Additional information for sensor selection	Reduction factor 1, resistant to magnetic fields
Electrical output	NPN
Selection of sensor design	Resistant to welding spatter