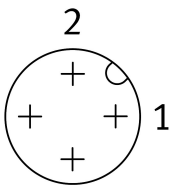
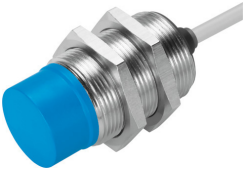


Proximity sensor SIED-M30NB-ZO-K-L

Part number: 538286

FESTO



Data sheet

| Feature | Value |
|---|--|
| Design | Round |
| Conforms to standard | EN 60947-5-2 |
| Approval | RCM trademark c UL us listed (OL) |
| CE mark (see declaration of conformity) | To EU EMC Directive To EU Low Voltage Directive |
| Measuring principle | Inductive |
| Rated operating distance | 15 mm |
| Assured operating distance | 12.15 mm |
| Reduction factors | Aluminium = 0.5 Stainless steel St 18/8 = 0.8 Copper = 0.4 Brass = 0.5 Steel St 37 = 1.0 |
| Ambient temperature | -25 °C...85 °C |
| Repetition accuracy | 0.4 mm |
| Switching output | Non-contacting, 2-wire |
| Switching element function | N/C contact |
| Hysteresis | 0.04 mm...3.3 mm |
| Max. switching frequency DC | 220 Hz |
| Max. switching frequency AC | 25 Hz |
| Max. output current | 300 mA |
| Voltage drop | 8 V |
| Min. load current | 5 mA |
| Short circuit current rating | no |
| Operational voltage range AC | 20 V...265 V |
| Operational voltage range DC | 20 V...320 V |
| Mains frequency | 50 Hz |
| No-load supply current | 1.5 mA |
| Reverse polarity protection | For all electrical connections |
| Electrical connection | 2-wire Cable |

| Feature | Value |
|---|------------------------------|
| Cable length | 2.5 m |
| Material cable sheath | TPE-U(PUR) |
| Material insulating sheath | PVC |
| Size | M30 |
| Type of mounting | Via lock nut |
| Tightening torque | 30 Nm |
| Mounting type | Not flush |
| Product weight | 190 g |
| Material housing | Brass PA Nickel-plated |
| Switching status indication | Yellow LED |
| Ambient temperature with moving cable | -5 °C...50 °C |
| Degree of protection | IP67 |
| Corrosion resistance class CRC | 1 - Low corrosion stress |
| LABS (PWIS) conformity | VDMA24364-B2-L |
| Additional information for sensor selection | For DC and AC voltage |
| Electrical output | Non-contacting, 2-wire |
| Selection of sensor design | Standard |