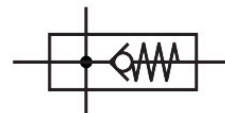


Branching module MS6N-FRM-1/2-I-Z

Part number: 536984

FESTO



Data sheet

Feature	Value
Mounting position	optional
Design	Branching module With non-return function
Operating pressure	0 bar...20 bar
Standard nominal flow rate in main flow direction 1->2	6000 l/min
Standard nominal flow rate, outlet upwards	3100 l/min
Standard nominal flow rate, outlet downwards	3300 l/min
Operational voltage range AC	0 V...250 V
Operational voltage range DC	0 V...125 V
Operating medium	Compressed air to ISO 8573-1:2010 [7:4:4] Inert gases
Note on operating and pilot medium	Lubricated operation possible (in which case lubricated operation will always be required)
Corrosion resistance class CRC	2 - Moderate corrosion stress
LABS (PWIS) conformity	VDMA24364-B1/B2-L
Storage temperature	-10 °C...60 °C
Suitable for use with food	See supplementary material information
Media temperature	-10 °C...60 °C
Ambient temperature	-10 °C...60 °C
Product weight	400 g
Pneumatic connection, port 1	1/2 NPT
Pneumatic connection, port 2	1/2 NPT
Pneumatic connection, port 3	1/2 NPT
Pneumatic connection, port 4	1/2 NPT
Note on materials	RoHS-compliant
Material housing	Die-cast aluminium