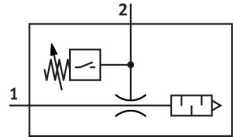


Vacuum generator

VN-05-H-T4-PQ2-VQ2-O2-P

Part number: 536797

FESTO



Data sheet

Feature	Value
Nominal size, Laval nozzle	0.45 mm
Grid dimension	16 mm
Silencer design	Open
Mounting position	optional
Ejector characteristic	High vacuum Standard
Integrated function	Pressure sensor Open silencer
Design	T-shape
Short circuit current rating	Pulsed
Measured variable	Relative pressure
Measuring principle	Piezoresistive
Measurement method	Relative
Switching element function	N/O contact
Switching function	Threshold value comparator Threshold value with variable hysteresis
Reverse polarity protection	For all electrical connections
Display type	LED
Setting range threshold value	-100 kPa...0 kPa -1 bar...0 bar -14.5 psi...0 psi
Setting options	Teach-in
Switching status indication	LED
Operating pressure for max. suction flow rate	0.3 MPa 3 bar 43.5 psi
Operating pressure	0.1 MPa...0.8 MPa 1 bar...8 bar 14.5 psi...116 psi
Operating pressure for max. vacuum	0.49 MPa 4.9 bar 71.05 psi
Max. vacuum	92 %

Feature	Value
Nominal operating pressure	0.6 MPa 6 bar 87 psi
Max. suction flow rate against atmosphere	7.2 l/min
Switch-off time	4 ms
Switch-on time	4 ms
Operational voltage range DC	15 V...30 V
Inductive protective circuit	Adapted to MZ, MY, ME coils
Max. output current	100 mA
Off-state current	0.3 mA
Residual ripple	10 %
Switching output	PNP
Voltage drop	1.5 V
Overload protection	Available
Approval	RCM trademark
KC mark	KC-EMV
CE mark (see declaration of conformity)	To EU EMC Directive
UKCA marking (see declaration of conformity)	To UK instructions for EMC
Operating medium	Compressed air to ISO 8573-1:2010 [7:4:4]
Note on operating and pilot medium	Lubricated operation not possible
Corrosion resistance class CRC	1 - Low corrosion stress
LABS (PWIS) conformity	VDMA24364-B1/B2-L
Media temperature	0 °C...60 °C
Recommended cleaning/purification	Soapy water
Sound pressure level at nominal operating pressure	62 dB(A)
Degree of protection	IP40
Ambient temperature	0 °C...50 °C
Max. tightening torque	0.6 Nm
Pressure measuring range	-100 kPa...0 kPa -1 bar...0 bar -14.5 psi...0 psi
Product weight	33 g
Accuracy in ± % FS	1.5 %FS
Long-term drift	± 0.5% FS max.
Temperature coefficient of switching point	0.05 %/K
Electrical connection	3-pin M8
Type of mounting	With through-hole
Pneumatic connection, port 1	QS-6
Pneumatic connection, port 3	Open silencer
Vacuum connection	QS-6
Material seals	NBR
Material receiver nozzle	POM
Material housing	POM-reinforced
Material fibre-optic	PC
Material silencer	PE
Material connector housing	Brass PA Chrome-plated and nickel-plated
Material transmitter nozzle	Wrought aluminium alloy
Material keypad	POM
Material fitting	Brass Nickel-plated