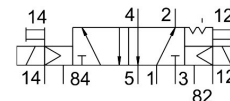


Solenoid valve

JMFH-5-1/2-S-EX

Part number: 535917

FESTO



Data sheet

Feature	Value
Valve function	5/2 double solenoid
Type of actuation	Electric
Construction width	52 mm
Standard nominal flow rate (standardised to DIN 1343)	4500 l/min
pneumatic working port	G1/2
Operating voltage	Via solenoid coil, must be ordered separately
Operating pressure	0 MPa...0.8 MPa 0 bar...8 bar
Design	Poppet seat
CE mark (see declaration of conformity)	To EU Explosion Protection Directive (ATEX)
Explosion protection certification outside the EU	EPL Db (GB) EPL Gb (GB)
UKCA marking (see declaration of conformity)	To UK EX instructions
ATEX category gas	II 2G
ATEX category dust	II 2D
Explosion ignition protection type for gas	Ex h IIC T4 Gb
Explosion ignition protection type for dust	Ex h IIIC T130°C Db
Explosion ambient temperature	-5 °C <= Ta <= +40 °C
Degree of protection	IP65
Nominal size	14 mm
Grid dimension	69 mm
Exhaust-air function	With flow control option
Sealing principle	Soft
Mounting position	optional
Manual override	Detenting
Type of piloting	Pilot actuated
Pilot air supply	External
Flow direction	Non-reversible
lap	Underlap
Pilot pressure	0.1 MPa...0.8 MPa 1 bar...8 bar
b value	0.3

Feature	Value
C value	19.5 l/sbar
Max. switching frequency	25 Hz
Switching time reversal	20 ms
Max. positive test pulse with 0 signal	2200 µs
Max. negative test pulse with 1 signal	3700 µs
Characteristic coil data	See solenoid coil, to be ordered separately
Explosion protection	Zone 1 (ATEX) Zone 1 (UKEX) Zone 2 (ATEX) Zone 21 (ATEX) Zone 21 (UKEX) Zone 22 (ATEX)
Operating medium	Compressed air to ISO 8573-1:2010 [7:4:4]
Note on operating and pilot medium	Lubricated operation possible (in which case lubricated operation will always be required)
Corrosion resistance class CRC	1 - Low corrosion stress
LABS (PWIS) conformity	VDMA24364-B1/B2-L
Storage temperature	-20 °C...60 °C
Media temperature	-5 °C...40 °C
Pilot medium	Compressed air to ISO 8573-1:2010 [7:4:4]
Ambient temperature	-5 °C...40 °C
Product weight	1210 g
Electrical connection	Via F coil, to be ordered separately
Type of mounting	On manifold rail With through-hole Either:
Auxiliary pilot air port 12	G1/8
Auxiliary pilot air port 14	G1/8
Breather connection	M5
Pilot exhaust port 82	M5
Pilot exhaust port 84	M5
Pilot air port 12	G1/8
Pneumatic connection, port 1	G1/2
Pneumatic connection, port 2	G1/2
Pneumatic connection, port 3	G1/2
Pneumatic connection, port 4	G1/2
Pneumatic connection, port 5	G1/2
Note on materials	RoHS-compliant
Material seals	NBR TPE-U(PU)
Material housing	Die-cast aluminium