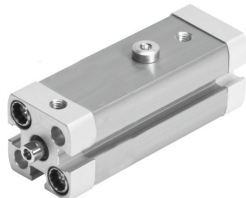


Linear/swivel clamp CLR-12-20-R-P-A

Part number: 535433

FESTO



Data sheet

| Feature | Value |
|---|--|
| Total stroke | 29 mm |
| Piston diameter | 12 mm |
| Piston rod thread | M3 |
| Swivel angle | 90 deg +/-4 deg |
| Clamping stroke | 20 mm |
| Cushioning | Elastic cushioning rings/plates at both ends |
| Mounting position | optional |
| Design | Piston Piston rod Cylinder barrel |
| Position detection | Via proximity switch |
| Swivel direction | Right |
| Operating pressure | 2 bar...10 bar |
| Mode of operation | Double-acting |
| Operating medium | Compressed air to ISO 8573-1:2010 [7:4:4] |
| Note on operating and pilot medium | Lubricated operation possible (in which case lubricated operation will always be required) |
| Corrosion resistance class CRC | 2 - Moderate corrosion stress |
| LABS (PWIS) conformity | VDMA24364-B2-L |
| Ambient temperature | -10 °C...80 °C |
| Effective clamping force at 0.2 MPa (2 bar, 29 psi) | 12 N |
| Effective clamping force at 0.4 MPa (4 bar, 58 psi) | 23 N |
| Effective clamping force at 0.6 MPa (6 bar, 87 psi) | 34 N |
| Max. tightening torque Clamping finger screw | 1.2 Nm |
| Theoretical clamping force at 0.6 MPa (6 bar, 87 psi) | 51 N |
| Product weight | 160 g |
| Type of mounting | With through-hole Via female thread With accessories Either: |
| Pneumatic connection | M5 |
| Material collar screws | Steel Galvanised |

| Feature | Value |
|--------------------------|--|
| Material cover | Wrought aluminium alloy Coated |
| Material seals | NBR TPE-U(PU) |
| Material housing | Wrought aluminium alloy Smooth anodised |
| Material piston rod | High-alloy stainless steel |
| Material cylinder barrel | Wrought aluminium alloy Smooth anodised |