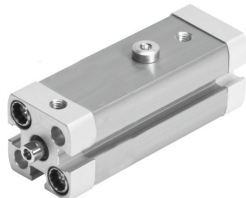


# Linear/swivel clamp CLR-12-10-L-P-A

Part number: 535432

FESTO



## Data sheet

Feature	Value
Total stroke	19 mm
Piston diameter	12 mm
Piston rod thread	M3
Swivel angle	90 deg +/-4 deg
Clamping stroke	10 mm
Cushioning	Elastic cushioning rings/plates at both ends
Mounting position	optional
Design	Piston Piston rod Cylinder barrel
Position detection	Via proximity switch
Swivel direction	Left
Operating pressure	2 bar...10 bar
Mode of operation	Double-acting
Operating medium	Compressed air to ISO 8573-1:2010 [7:4:4]
Note on operating and pilot medium	Lubricated operation possible (in which case lubricated operation will always be required)
Corrosion resistance class CRC	2 - Moderate corrosion stress
LABS (PWIS) conformity	VDMA24364-B2-L
Ambient temperature	-10 °C...80 °C
Effective clamping force at 0.2 MPa (2 bar, 29 psi)	12 N
Effective clamping force at 0.4 MPa (4 bar, 58 psi)	23 N
Effective clamping force at 0.6 MPa (6 bar, 87 psi)	34 N
Max. tightening torque Clamping finger screw	1.2 Nm
Theoretical clamping force at 0.6 MPa (6 bar, 87 psi)	51 N
Product weight	135 g
Type of mounting	With through-hole Via female thread With accessories Either:
Pneumatic connection	M5
Material collar screws	Steel Galvanised

Feature	Value
Material cover	Wrought aluminium alloy Coated
Material seals	NBR TPE-U(PU)
Material housing	Wrought aluminium alloy Smooth anodised
Material piston rod	High-alloy stainless steel
Material cylinder barrel	Wrought aluminium alloy Smooth anodised