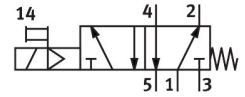
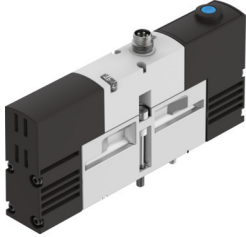


# Solenoid valve

## VSVA-B-M52-MH-A2-1R2L

Part number: 534775

FESTO



## Data sheet

| Feature   | Value  |
|---|--|
| Valve function  | 5/2-way, monostable  |
| Type of actuation                                     | Electric   |
| Construction width                                    | 18 mm  |
| Standard nominal flow rate (standardised to DIN 1343) | 550 l/min  |
| pneumatic working port                                | Sub-base size 18 mm to ISO 15407-1<br>Sub-base size 02 to VDMA 24563 |
| Operating voltage                                     | 24V DC   |
| Operating pressure                                    | 0.3 MPa...0.8 MPa<br>3 bar...8 bar                                   |
| Design  | Piston gate valve  |
| Type of reset   | Mechanical spring  |
| Approval  | C-Tick<br>c UL us - Recognized (OL)                                  |
| CE mark (see declaration of conformity)               | To EU EMC Directive  |
| UKCA marking (see declaration of conformity)          | To UK instructions for EMC<br>To UK RoHS instructions                |
| Degree of protection                                  | IP65   |
| Nominal size  | 5 mm   |
| Exhaust-air function                                  | With flow control option   |
| Sealing principle                                     | Soft   |
| Mounting position                                     | optional   |
| Conforms to standard                                  | ISO 15407-1<br>VDMA 24563  |
| Manual override                                       | Non-detenting  |
| Type of piloting                                      | Pilot actuated   |
| Pilot air supply                                      | Internal   |
| Flow direction  | Non-reversible   |
| lap   | Overlap  |
| Reverse polarity protection                           | For all electrical connections                                       |
| Additional functions                                  | Holding current reduction<br>Safety shut-off                         |
| Signal status display                                 | LED  |
| Flow rate of valve                                    | 750 l/min  |

| Feature  | Value  |
|--|--|
| Flow rate of valve on individual sub-base      | 550 l/min  |
| Flow rate of pneumatically interlinked valve   | 550 l/min  |
| Switching time off                             | 34 ms  |
| Switching time on                              | 12 ms  |
| Operational voltage range DC                   | 21.6 V...26.4 V  |
| Duty cycle                                     | 100%   |
| Max. positive test pulse with 0 signal         | 500 µs   |
| Max. negative test pulse with 1 signal         | 500 µs   |
| Characteristic coil data                       | 24 V DC: low-current phase 1.0 W, high-current phase 2.4 W                                 |
| Operating medium                               | Compressed air to ISO 8573-1:2010 [7:4:4]  |
| Note on operating and pilot medium             | Lubricated operation possible (in which case lubricated operation will always be required) |
| Vibration resistance                           | Transport application test with severity level 2 to FN 942017-4 and EN 60068-2-6           |
| Shock resistance                               | Shock test with severity level 2 to FN 942017-5 and EN 60068-2-27                          |
| Corrosion resistance class CRC                 | 2 - Moderate corrosion stress  |
| LABS (PWIS) conformity                         | VDMA24364-B1/B2-L  |
| Media temperature                              | -5 °C...50 °C  |
| Relative air humidity                          | 0 - 90%  |
| Protection against direct and indirect contact | PELV   |
| Ambient temperature                            | -5 °C...50 °C  |
| Max. tightening torque for valve mounting      | 0.9 Nm...1.1 Nm  |
| Product weight                                 | 140 g  |
| Electrical connection                          | 4-pin<br>M8x1<br>Central plug<br>Round design  |
| Type of mounting                               | On sub-base  |
| Note on materials                              | RoHS-compliant   |