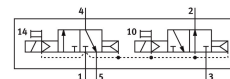
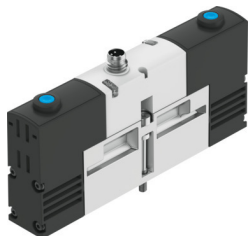


Solenoid valve

VSVA-B-T32H-AH-A2-1R2L

Part number: 534773

FESTO



Data sheet

Feature	Value
Valve function	2x3/2-way, open/closed, monostable
Type of actuation	Electric
Construction width	18 mm
Standard nominal flow rate (standardised to DIN 1343)	400 l/min
pneumatic working port	Sub-base size 18 mm to ISO 15407-1 Sub-base size 02 to VDMA 24563
Operating voltage	24V DC
Operating pressure	0.3 MPa...0.8 MPa 3 bar...8 bar
Design	Piston gate valve
Type of reset	Pneumatic spring
Approval	C-Tick c UL us - Recognized (OL)
CE mark (see declaration of conformity)	To EU EMC Directive
UKCA marking (see declaration of conformity)	To UK instructions for EMC To UK RoHS instructions
Degree of protection	IP65
Nominal size	5 mm
Exhaust-air function	With flow control option
Sealing principle	Soft
Mounting position	optional
Conforms to standard	ISO 15407-1 VDMA 24563
Manual override	Non-detenting
Type of piloting	Pilot actuated
Pilot air supply	Internal
Flow direction	Non-reversible
lap	Overlap
Reverse polarity protection	For all electrical connections
Additional functions	Holding current reduction Safety shut-off
Signal status display	LED
Flow rate of valve	600 l/min

Feature	Value
Flow rate of valve on individual sub-base	450 l/min
Flow rate of pneumatically interlinked valve	400 l/min
Switching time off	22 ms
Switching time on	10 ms
Operational voltage range DC	21.6 V...26.4 V
Duty cycle	100%
Max. positive test pulse with 0 signal	500 µs
Max. negative test pulse with 1 signal	500 µs
Characteristic coil data	24 V DC: low-current phase 1.0 W, high-current phase 2.4 W
Operating medium	Compressed air to ISO 8573-1:2010 [7:4:4]
Note on operating and pilot medium	Lubricated operation possible (in which case lubricated operation will always be required)
Vibration resistance	Transport application test with severity level 2 to FN 942017-4 and EN 60068-2-6
Shock resistance	Shock test with severity level 2 to FN 942017-5 and EN 60068-2-27
Corrosion resistance class CRC	2 - Moderate corrosion stress
LABS (PWIS) conformity	VDMA24364-B1/B2-L
Media temperature	-5 °C...50 °C
Relative air humidity	0 - 90%
Protection against direct and indirect contact	PELV
Ambient temperature	-5 °C...50 °C
Max. tightening torque for valve mounting	0.9 Nm...1.1 Nm
Product weight	140 g
Electrical connection	4-pin M8x1 Central plug Round design
Type of mounting	On sub-base
Note on materials	RoHS-compliant