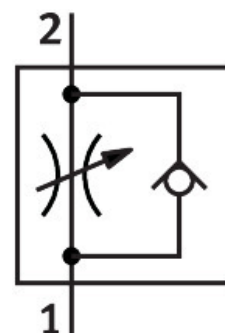


# One-way flow control valve GR-QB-1/2-U

Part number: 534685

**FESTO**



## Data sheet

| Feature   | Value  |
|---|--|
| Valve function  | One-way flow control function  |
| Pneumatic connection, port 1  | QB-1/2   |
| Pneumatic connection, port 2  | QB-1/2   |
| Type of actuation   | Manual   |
| Adjustment component  | Slotted head screw   |
| Type of mounting  | In-line installation<br>With through-hole<br>Either:                                       |
| Standard nominal flow rate in flow control direction                          | 62.8 cfm   |
| Standard nominal flow rate in blocked direction                               | 48.5 cfm...57 cfm  |
| Operating pressure  | -13.8 psi...116 psi  |
| Ambient temperature   | 0 °C...60 °C   |
| Material housing  | PBT-reinforced   |
| Mounting position   | optional   |
| Standard flow rate in flow control direction 0.6->0 MPa (6->0 bar, 87->0 psi) | 104 cfm  |
| Standard flow rate in non-return direction 0.6->0 MPa (6->0 bar, 87->0 psi)   | 74.5 cfm...90.7 cfm  |
| Operating medium  | Compressed air to ISO 8573-1:2010 [7:4:4]  |
| Note on operating and pilot medium  | Lubricated operation possible (in which case lubricated operation will always be required) |
| LABS (PWIS) conformity  | VDMA24364 zone III   |
| Media temperature   | 32 °F...140 °F   |
| Product weight  | 4.2 oz   |
| Material screwed plug   | Brass<br>Nickel-plated   |
| Note on materials   | RoHS-compliant   |
| Material seals  | NBR  |

| Feature                  | Value                  |
|--------------------------|------------------------|
| Material release ring    | POM                    |
| Material knurled head    | Brass<br>Nickel-plated |
| Material adjusting screw | Brass<br>Nickel-plated |