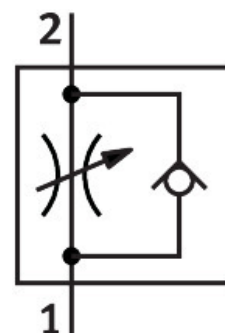


One-way flow control valve GR-QB-3/8-U

Part number: 534684

FESTO



Data sheet

Feature	Value
Valve function	One-way flow control function
Pneumatic connection, port 1	QB-3/8
Pneumatic connection, port 2	QB-3/8
Type of actuation	Manual
Adjustment component	Slotted head screw
Type of mounting	In-line installation With through-hole Either:
Standard nominal flow rate in flow control direction	51.2 cfm
Standard nominal flow rate in blocked direction	36.4 cfm...52.5 cfm
Operating pressure	-13.8 psi...116 psi
Ambient temperature	0 °C...60 °C
Material housing	PBT-reinforced
Mounting position	optional
Standard flow rate in flow control direction 0.6->0 MPa (6->0 bar, 87->0 psi)	85.3 cfm
Standard flow rate in non-return direction 0.6->0 MPa (6->0 bar, 87->0 psi)	92 cfm...97.9 cfm
Operating medium	Compressed air to ISO 8573-1:2010 [7:4:4]
Note on operating and pilot medium	Lubricated operation possible (in which case lubricated operation will always be required)
LABS (PWIS) conformity	VDMA24364 zone III
Media temperature	32 °F...140 °F
Product weight	2.7 oz
Material screwed plug	Brass Nickel-plated
Note on materials	RoHS-compliant
Material seals	NBR

Feature	Value
Material release ring	POM
Material knurled head	Brass Nickel-plated
Material adjusting screw	Brass Nickel-plated