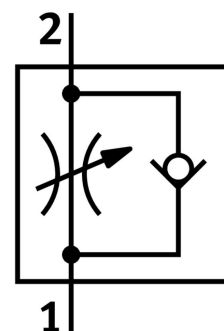


One-way flow control valve GRLA-1/8-QB-3/16-U

Part number: 534657

FESTO



Data sheet

| Feature | Value |
|---|--|
| Valve function | Exhaust air one-way flow control function |
| Pneumatic connection, port 1 | QB-3/16 |
| Pneumatic connection, port 2 | 1/8 NPT |
| Type of actuation | Manual |
| Adjustment component | Slotted head screw |
| Type of mounting | Screw-in Via male thread |
| Standard nominal flow rate in flow control direction | 30,4 cfm |
| Standard nominal flow rate in blocked direction | 23,5 cfm...31,1 cfm |
| Ambient temperature | 32 °F...140 °F |
| Mounting position | optional |
| Operating pressure complete temperature range | -13,8 psi...116 psi |
| Standard flow rate in flow control direction 0.6->0 MPa (6->0 bar, 87->0 psi) | 48,9 cfm |
| Standard flow rate in non-return direction 0.6->0 MPa (6->0 bar, 87->0 psi) | 48,9 cfm...50,7 cfm |
| Operating medium | Compressed air to ISO 8573-1:2010 [7:4:4] |
| Note on operating and pilot medium | Lubricated operation possible (in which case lubricated operation will always be required) |
| LABS (PWIS) conformity | VDMA24364 zone III |
| Media temperature | 32 °F...140 °F |
| Max. tightening torque | 5,2 ft-lbf |
| Product weight | 0,66 oz |
| Material screwed plug | Brass Nickel-plated |
| Note on materials | RoHS-compliant |
| Material seals | NBR |

| Feature | Value |
|--------------------------|------------------------|
| Material hollow bolt | Brass Nickel-plated |
| Material release ring | POM |
| Material knurled head | Brass Nickel-plated |
| Material adjusting screw | Brass Nickel-plated |
| Material swivel fitting | PBT-reinforced |