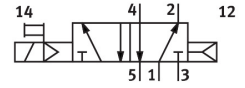
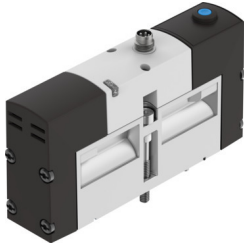


# Solenoid valve VSVA-B-M52-AH-A1-1R2L

Part number: 534535

**FESTO**



## Data sheet

| Feature   | Value   |
|---|---|
| Valve function  | 5/2-way, monostable   |
| Type of actuation                                     | Electric  |
| Construction width                                    | 26 mm   |
| Standard nominal flow rate (standardised to DIN 1343) | 1100 l/min  |
| pneumatic working port                                | Sub-base size 26 mm to ISO 15407-1  |
| Operating voltage                                     | 24V DC  |
| Operating pressure                                    | 0.3 MPa...0.8 MPa<br>3 bar...8 bar  |
| Design  | Piston gate valve   |
| Type of reset   | Pneumatic spring  |
| Approval  | RCM trademark<br>c UL us - Recognized (OL)                                |
| CE mark (see declaration of conformity)               | To EU EMC Directive   |
| UKCA marking (see declaration of conformity)          | To UK instructions for EMC<br>To UK RoHS instructions                     |
| Degree of protection                                  | IP65<br>NEMA 4  |
| Nominal size  | 9 mm  |
| Grid dimension  | 27 mm   |
| Exhaust-air function                                  | With flow control option<br>Via throttle plate<br>Via individual sub-base |
| Sealing principle                                     | Soft  |
| Mounting position                                     | optional  |
| Conforms to standard                                  | ISO 15407-1   |
| Manual override                                       | Non-detenting   |
| Type of piloting                                      | Pilot actuated  |
| Pilot air supply                                      | Internal  |
| Flow direction  | Non-reversible  |
| lap   | Overlap   |
| Reverse polarity protection                           | For all electrical connections  |
| Additional functions                                  | Holding current reduction<br>Safety shut-off                              |

| Feature  | Value  |
|--|--|
| Signal status display                          | LED  |
| b value  | 0.25   |
| C value  | 4.5 l/sbar   |
| Flow rate of valve                             | 1400 l/min   |
| Flow rate of valve on individual sub-base      | 1100 l/min   |
| Flow rate of pneumatically interlinked valve   | 1100 l/min   |
| Switching time off                             | 40 ms  |
| Switching time on                              | 25 ms  |
| Duty cycle                                     | 100%   |
| Max. positive test pulse with 0 signal         | 400 µs   |
| Max. negative test pulse with 1 signal         | 100 µs   |
| Nominal pick-up current per solenoid coil      | 110 mA up to 20 ms   |
| Nominal current with current reduction         | 30 mA after 20 ms  |
| Characteristic coil data                       | 24 V DC: low-current phase 1.0 W, high-current phase 2.4 W                                 |
| Permissible voltage fluctuations               | +/- 10 %   |
| Operating medium                               | Compressed air to ISO 8573-1:2010 [7:4:4]  |
| Note on operating and pilot medium             | Lubricated operation possible (in which case lubricated operation will always be required) |
| Vibration resistance                           | Transport application test with severity level 2 to FN 942017-4 and EN 60068-2-6           |
| Shock resistance                               | Shock test with severity level 2 to FN 942017-5 and EN 60068-2-27                          |
| Corrosion resistance class CRC                 | 2 - Moderate corrosion stress  |
| LABS (PWIS) conformity                         | VDMA24364-B1/B2-L  |
| Media temperature                              | -5 °C...50 °C  |
| Relative air humidity                          | 0 - 90%  |
| Protection against direct and indirect contact | PELV   |
| Pilot medium                                   | Compressed air to ISO 8573-1:2010 [7:4:4]  |
| Ambient temperature                            | -5 °C...50 °C  |
| Max. tightening torque for valve mounting      | 1.8 Nm...2.2 Nm  |
| Product weight                                 | 270 g  |
| Electrical connection                          | 4-pin<br>M8x1<br>Central plug<br>Round design  |
| Type of mounting                               | On sub-base<br>Via through-hole and screw  |
| Note on materials                              | RoHS-compliant   |
| Material seals                                 | FPM<br>HNBR<br>NBR   |
| Material housing                               | Die-cast aluminium   |