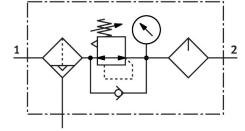


Service unit combination
MSB6N-1/2-FRC12:J10M2
Part number: 533985

FESTO



Data sheet

Feature	Value
Size	6
Series	MS
Actuator lock	Rotary knob with integrated lock
Mounting position	Vertical +/- 5°
Grade of filtration	5 µm
Condensate drain	Fully automatic
Design	Filter regulator with pressure gauge Proportional standard mist lubricator
Controller function	Output pressure constant Via primary pressure compensation With secondary venting With return flow function
Bowl guard	Integrated as metal bowl
Pressure gauge (ANALOG) or Pressure display (DIGITAL)	With pressure gauge
Operating pressure	1,5 bar...12 bar
Pressure regulation range	0,5 bar...12 bar
Standard nominal flow rate (standardised to DIN 1343)	3600 l/min
Operating medium	Compressed air to ISO 8573-1:2010 [7:4:-] Inert gases
Note on operating and pilot medium	Lubricated operation possible (in which case lubricated operation will always be required)
Corrosion resistance class CRC	2 - Moderate corrosion stress
LABS (PWIS) conformity	VDMA24364-B1/B2-L
Storage temperature	-10 °C...60 °C
Suitable for use with food	See supplementary material information
Air purity class at output	Compressed air to ISO 8573-1:2010 [6:4:-]
Media temperature	5 °C...60 °C
Ambient temperature	5 °C...60 °C
Product weight	1713 g
Type of mounting	With accessories
Pneumatic connection, port 1	1/2 NPT
Pneumatic connection, port 2	1/2 NPT
Note on materials	RoHS-compliant