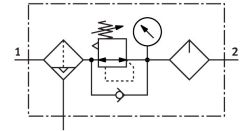


# Service unit combination MSB4N-1/8-FRC2:J6M1

Part number: 533965

**FESTO**



## Data sheet

| Feature   | Value  |
|---|--|
| Size  | 4  |
| Series  | MS   |
| Actuator lock   | Rotary knob with integrated lock   |
| Mounting position                                     | Vertical +/- 5°  |
| Grade of filtration                                   | 40 µm  |
| Condensate drain                                      | Fully automatic  |
| Design  | Filter regulator with pressure gauge<br>Proportional standard mist lubricator  |
| Controller function                                   | Output pressure constant<br>Via primary pressure compensation<br>With secondary venting<br>With return flow function |
| Bowl guard  | Plastic bowl guard   |
| Pressure gauge (ANALOG) or Pressure display (DIGITAL) | With pressure gauge  |
| Operating pressure                                    | 1.5 bar...12 bar   |
| Pressure regulation range                             | 1 bar...7 bar  |
| Standard nominal flow rate (standardised to DIN 1343) | 950 l/min  |
| Operating medium                                      | Compressed air to ISO 8573-1:2010 [7:4:-]<br>Inert gases   |
| Note on operating and pilot medium                    | Lubricated operation possible (in which case lubricated operation will always be required)                           |
| Corrosion resistance class CRC                        | 2 - Moderate corrosion stress  |
| LABS (PWIS) conformity                                | VDMA24364-B1/B2-L  |
| Storage temperature                                   | -10 °C...60 °C   |
| Suitable for use with food                            | See supplementary material information   |
| Air purity class at output                            | Compressed air to ISO 8573-1:2010 [7:4:-]  |
| Media temperature                                     | 5 °C...60 °C   |
| Ambient temperature                                   | 5 °C...60 °C   |
| Product weight  | 500 g  |
| Type of mounting                                      | With accessories   |
| Pneumatic connection, port 1                          | 1/8 NPT  |
| Pneumatic connection, port 2                          | 1/8 NPT  |
| Material housing                                      | Die-cast aluminium   |

| Feature       | Value |
|---------------|-------|
| Material bowl | PC    |