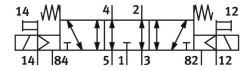
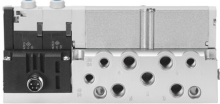


# Solenoid valve

## VMPA1-M1H-E-S-M7-PI

Part number: 533389

**FESTO**



## Data sheet

| Feature   | Value   |
|---|---|
| Valve function  | 5/3 exhausted   |
| Type of actuation                                     | Electric  |
| Valve size  | 10 mm   |
| Standard nominal flow rate (standardised to DIN 1343) | 240 l/min   |
| pneumatic working port                                | M7  |
| Operating voltage                                     | 24V DC  |
| Operating pressure                                    | -0.09 MPa...1 MPa<br>-0.9 bar...10 bar                      |
| Design  | Piston gate valve   |
| Type of reset   | Mechanical spring   |
| Approval  | c UL us - Recognized (OL)                                   |
| CE mark (see declaration of conformity)               | To EU EMC Directive<br>In accordance with EU RoHS Directive |
| UKCA marking (see declaration of conformity)          | To UK instructions for EMC<br>To UK RoHS instructions       |
| Degree of protection                                  | IP65<br>In assembled state<br>To IEC 60529                  |
| Exhaust-air function                                  | With flow control option                                    |
| Sealing principle                                     | Soft  |
| Mounting position                                     | optional  |
| Manual override                                       | Detenting<br>Non-detenting                                  |
| Type of piloting                                      | Pilot actuated  |
| Pilot air supply                                      | External  |
| Flow direction  | Reversible  |
| lap   | Overlap   |
| Signal status display                                 | yes   |
| Pilot pressure  | 0.3 MPa...0.8 MPa<br>3 bar...8 bar                          |
| Suitability for vacuum                                | yes   |
| Standard nominal flow rate with QS-6                  | 240 l/min   |
| Switching time off                                    | 35 ms   |

| Feature                                   | Value  |
|---|--|
| Switching time on                         | 10 ms  |
| Switching time reversal                   | 15 ms  |
| Max. positive test pulse with 0 signal    | 400 µs   |
| Max. negative test pulse with 1 signal    | 200 µs   |
| Permissible voltage fluctuations          | +/- 25%  |
| Operating medium                          | Compressed air to ISO 8573-1:2010 [7:4:4]  |
| Note on operating and pilot medium        | Lubricated operation possible (in which case lubricated operation will always be required) |
| Vibration resistance                      | Transport application test with severity level 2 to FN 942017-4 and EN 60068-2-6           |
| Shock resistance                          | Shock test with severity level 2 to FN 942017-5 and EN 60068-2-27                          |
| Corrosion resistance class CRC            | 1 - Low corrosion stress   |
| LABS (PWIS) conformity                    | VDMA24364-B1/B2-L  |
| Storage temperature                       | -20 °C...40 °C   |
| Media temperature                         | -5 °C...50 °C  |
| Relative air humidity                     | Max. 90% at 40°C   |
| Ambient temperature                       | -5 °C...50 °C  |
| Max. tightening torque for valve mounting | 0.25 Nm  |
| Product weight                            | 143 g  |
| Electrical connection                     | 4-pin<br>M8x1<br>Plugs<br>To EN 60947-5-2  |
| Type of mounting                          | With through-hole  |
| Pilot air port 12/14                      | M5   |
| Pilot exhaust port 82/84                  | M5   |
| Pneumatic connection, port 1              | M7   |
| Pneumatic connection, port 2              | M7   |
| Pneumatic connection, port 3              | M7   |
| Pneumatic connection, port 4              | M7   |
| Pneumatic connection, port 5              | M7   |
| Note on materials                         | RoHS-compliant   |
| Material seals                            | NBR  |
| Material housing                          | Die-cast aluminium   |