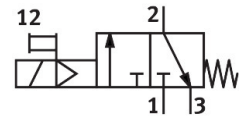


On/off valve MS4N-EE-1/8-V230

Part number: 532088

FESTO



Data sheet

Feature	Value
Design	Piston gate valve
Type of actuation	Electric
Exhaust-air function	Without flow control option
Manual override	Detenting Non-detenting
Type of reset	Mechanical spring
Type of piloting	Pilot actuated
Valve function	3/2-way, closed, monostable
Operating pressure	4 bar...14 bar
lap	Overlap
C value	4.5 l/sbar
b value	0.5
Standard nominal flow rate (standardised to DIN 1343)	1000 l/min
Duty cycle	100%
Characteristic coil data	230 V AC: 50/60 Hz, pick-up power 3.0 VA, holding power 2.4 VA
Operating medium	Compressed air to ISO 8573-1:2010 [7:4:4] Inert gases
Note on operating and pilot medium	Lubricated operation possible (in which case lubricated operation will always be required)
Corrosion resistance class CRC	2 - Moderate corrosion stress
Note on materials	RoHS-compliant
LABS (PWIS) conformity	VDMA24364-B1/B2-L
Media temperature	-10 °C...60 °C
Degree of protection	IP65
Ambient temperature	-10 °C...60 °C
Suitable for use with food	See supplementary material information
Type of mounting	In-line installation With accessories Either:
Mounting position	optional
Flow direction	Non-reversible
Product weight	273 g
Pneumatic connection, port 1	1/8 NPT

Feature	Value
Pneumatic connection, port 2	1/8 NPT
Pneumatic connection, port 3	G1/4
Pilot air supply	Internal
Electrical connection	Type C Plugs To DIN EN 175301-803 Square design
Material seals	NBR
Material housing	Die-cast aluminium