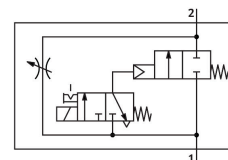


# Soft start valve MS4N-DE-1/4-V110

Part number: 532003

FESTO



## Data sheet

| Feature   | Value  |
|---|--|
| Type of actuation                                     | Electric   |
| Mounting position                                     | optional   |
| Manual override                                       | Detenting<br>Non-detenting   |
| Design  | Piston seat  |
| Type of reset   | Mechanical spring  |
| Type of piloting                                      | Pilot actuated   |
| Pilot air supply                                      | Internal   |
| Flow direction  | Non-reversible   |
| Valve function  | 2/2  |
| Switching position indicator                          | With accessories   |
| Operating pressure                                    | 4 bar...14 bar   |
| b value   | 0.45   |
| C value   | 9.6 l/sbar   |
| Standard nominal flow rate (standardised to DIN 1343) | 2000 l/min   |
| Duty cycle  | 100%   |
| Characteristic coil data                              | 110 V AC: 50/60 Hz, pick-up power 3.0 VA, holding power 2.4 VA                             |
| Approval  | c UL us - Recognized (OL)  |
| Operating medium                                      | Compressed air to ISO 8573-1:2010 [7:4:4]<br>Inert gases                                   |
| Note on operating and pilot medium                    | Lubricated operation possible (in which case lubricated operation will always be required) |
| Corrosion resistance class CRC                        | 2 - Moderate corrosion stress  |
| LABS (PWIS) conformity                                | VDMA24364-B1/B2-L  |
| Suitable for use with food                            | See supplementary material information   |
| Media temperature                                     | -10 °C...60 °C   |
| Degree of protection                                  | IP65   |
| Ambient temperature                                   | -10 °C...60 °C   |
| Product weight  | 263 g  |
| Electrical connection                                 | Type C<br>Plugs<br>To DIN EN 175301-803<br>Square design                                   |

| Feature                      | Value   |
|------------------------------|---|
| Signal status display        | With accessories                                    |
| Type of mounting             | In-line installation<br>With accessories<br>Either: |
| Pneumatic connection, port 1 | 1/4 NPT   |
| Pneumatic connection, port 2 | 1/4 NPT   |
| Note on materials            | RoHS-compliant                                      |
| Material seals               | NBR   |
| Material housing             | Die-cast aluminium                                  |