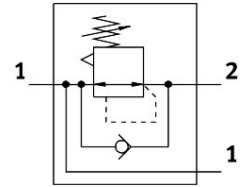
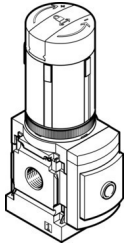


# Pressure regulator MS4N-LRB-1/4-D6-A8-AS

Part number: 531793

**FESTO**



## Data sheet

| Feature   | Value  |
|---|--|
| Size  | 4  |
| Series  | MS   |
| Actuator lock   | Rotary knob with detent<br>can be closed with accessories                                  |
| Mounting position                                     | optional   |
| Design  | Directly actuated diaphragm regulator<br>With through compressed air supply                |
| Controller function                                   | Output pressure constant<br>With secondary venting<br>With return flow function            |
| Pressure gauge (ANALOG) or Pressure display (DIGITAL) | Prepared for G1/8  |
| Operating pressure                                    | 0.8 bar...14 bar   |
| Pressure regulation range                             | 0.3 bar...7 bar  |
| Max. pressure hysteresis                              | 0.25 bar   |
| Standard nominal flow rate (standardised to DIN 1343) | 1700 l/min   |
| Operating medium                                      | Compressed air to ISO 8573-1:2010 [7:4:4]<br>Inert gases                                   |
| Note on operating and pilot medium                    | Lubricated operation possible (in which case lubricated operation will always be required) |
| Corrosion resistance class CRC                        | 2 - Moderate corrosion stress  |
| LABS (PWIS) conformity                                | VDMA24364-B1/B2-L  |
| Storage temperature                                   | -10 °C...60 °C   |
| Suitable for use with food                            | See supplementary material information   |
| Media temperature                                     | -10 °C...60 °C   |
| Ambient temperature                                   | -10 °C...60 °C   |
| Product weight  | 222 g  |
| Type of mounting                                      | Front panel mounting<br>In-line installation<br>With accessories<br>Either:                |
| Pneumatic connection, port 1                          | 1/4 NPT  |
| Pneumatic connection, port 2                          | 1/4 NPT  |
| Note on materials                                     | RoHS-compliant   |

| Feature                | Value              |
|------------------------|--------------------|
| Material sub-base      | Die-cast aluminium |
| Material control panel | PA<br>POM          |
| Material seals         | NBR                |
| Material housing       | Die-cast aluminium |
| Material membrane      | NBR                |