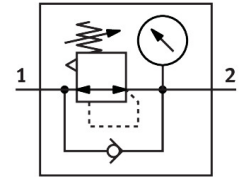


Pressure regulator MS6N-LR-1/4-D6-AS

Part number: 531448

FESTO



Data sheet

Feature	Value
Size	6
Series	MS
Actuator lock	Rotary knob with detent can be closed with accessories
Mounting position	optional
Design	Pressure regulator with pressure gauge
Controller function	Output pressure constant Via primary pressure compensation With secondary venting
Pressure gauge (ANALOG) or Pressure display (DIGITAL)	With pressure gauge
Operating pressure	0.8 bar...20 bar
Pressure regulation range	0.3 bar...7 bar
Max. pressure hysteresis	0.25 bar
Standard nominal flow rate (standardised to DIN 1343)	3000 l/min
Operating medium	Compressed air to ISO 8573-1:2010 [7:4:4] Inert gases
Note on operating and pilot medium	Lubricated operation possible (in which case lubricated operation will always be required)
Corrosion resistance class CRC	2 - Moderate corrosion stress
LABS (PWIS) conformity	VDMA24364-B1/B2-L
Storage temperature	-10 °C...60 °C
Suitable for use with food	See supplementary material information
Media temperature	-10 °C...60 °C
Ambient temperature	-10 °C...60 °C
Product weight	730 g
Type of mounting	Front panel mounting In-line installation With accessories Either:
Pneumatic connection, port 1	1/4 NPT
Pneumatic connection, port 2	1/4 NPT
Note on materials	RoHS-compliant
Material control panel	PA POM

Feature	Value
Material seals	NBR
Material housing	Die-cast aluminium
Material membrane	NBR
Material separating plate	POM