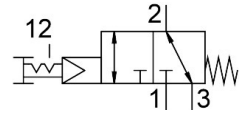


Pushbutton valve VHEF-PTC-B32-N18

Part number: 5299719

FESTO



Data sheet

| Feature | Value |
|---|--|
| Valve function | 3/2 double solenoid |
| Type of actuation | Manual |
| Construction width | 20 mm |
| Standard nominal flow rate (standardised to DIN 1343) | 750 l/min |
| pneumatic working port | 1/8 NPT |
| Operating pressure | 0.35 MPa...1 MPa 3.5 bar...10 bar |
| Design | Poppet seat |
| Nominal size | 5.6 mm |
| Exhaust-air function | With flow control option |
| Instructions on use | Actuate manually only |
| Sealing principle | Soft |
| Mounting position | optional |
| Manual override | Detenting |
| Type of piloting | Pilot actuated |
| Pilot air supply | Internal |
| Flow direction | Reversible |
| lap | Zero overlap |
| Pilot pressure | 0.35 MPa...1 MPa 3.5 bar...10 bar 50.75 psi...145 psi |
| Max. switching frequency | 0.5 Hz |
| Explosion protection | Zone 1 (ATEX) Zone 2 (ATEX) Zone 21 (ATEX) Zone 22 (ATEX) |
| Operating medium | Compressed air to ISO 8573-1:2010 [7:-:-] |
| Note on operating and pilot medium | Lubricated operation possible (in which case lubricated operation will always be required) |
| Corrosion resistance class CRC | 1 - Low corrosion stress |
| LABS (PWIS) conformity | VDMA24364-B1/B2-L |
| Media temperature | -10 °C...60 °C |
| Ambient temperature | -10 °C...60 °C |

| Feature | Value |
|------------------------------|--|
| Actuating force | 20 N |
| Unlocking force | 25 N |
| Product weight | 168 g |
| Type of mounting | Front panel mounting With through-hole Either: |
| Pneumatic connection, port 1 | 1/8 NPT |
| Pneumatic connection, port 2 | 1/8 NPT |
| Pneumatic connection, port 3 | 1/8 NPT |
| Note on materials | RoHS-compliant |
| Material cover | PA-reinforced |
| Material seals | NBR |
| Material housing | Anodised wrought aluminium alloy |