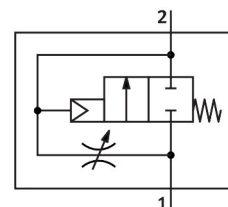


Soft start valve MS6-DL-1/2

Part number: 529817

FESTO



Data sheet

Feature	Value
Exhaust-air function	With flow control option
Type of actuation	Pneumatic
Mounting position	optional
Manual override	None
Design	Piston seat
Type of reset	Mechanical spring
Type of piloting	Direct
Pilot air supply	External
Flow direction	Non-reversible
Valve function	2/2
Operating pressure	4 bar...18 bar
b value	0.39
C value	28.97 l/sbar
Standard nominal flow rate (standardised to DIN 1343)	6450 l/min
Operating medium	Compressed air to ISO 8573-1:2010 [7:4:4] Inert gases
Note on operating and pilot medium	Lubricated operation possible (in which case lubricated operation will always be required)
Corrosion resistance class CRC	2 - Moderate corrosion stress
LABS (PWIS) conformity	VDMA24364-B1/B2-L
Suitable for use with food	See supplementary material information
Media temperature	-10 °C...60 °C
Ambient temperature	-10 °C...60 °C
Product weight	650 g
Type of mounting	In-line installation With accessories Either:
Pneumatic connection, port 1	G1/2
Pneumatic connection, port 2	G1/2
Note on materials	RoHS-compliant
Material seals	NBR

Feature	Value
Material housing	Die-cast aluminium