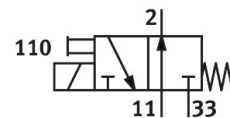


Solenoid valve

MHP3-M1H-3/20-1/8

Part number: 525158

FESTO



Data sheet

Feature	Value
Valve function	3/2 open, single solenoid
Type of actuation	Electric
Construction width	14 mm
Standard nominal flow rate (standardised to DIN 1343)	200 l/min
pneumatic working port	G1/8
Operating voltage	24V DC
Operating pressure	-0.09 MPa...0.8 MPa -0.9 bar...8 bar -13.05 psi...116 psi
Design	Pressure-relieved poppet valve
Type of reset	Mechanical spring
Degree of protection	IP65
Approval	c UL us - Recognized (OL)
Nominal size	3 mm
Grid dimension	19 mm
Note on grid dimension	Minimum distance between the valves is 5 mm
Exhaust-air function	With flow control option
Sealing principle	Soft
Mounting position	optional
Manual override	Non-detenting
Type of piloting	Direct
Flow direction	Reversible with restrictions
lap	Underlap
Operating pressure, reversible	-0.09 MPa...0.1 MPa -0.9 bar...1 bar -13.05 psi...14.5 psi
Max. switching frequency	130 Hz
Switching time off	4.5 ms
Switching time on	8.3 ms
Duty cycle	100%
Characteristic coil data	24 V DC: 3.7 W
Permissible voltage fluctuations	+/- 10 %

Feature	Value
Operating medium	Compressed air to ISO 8573-1:2010 [7:4:4]
Note on operating and pilot medium	Lubricated operation possible (in which case lubricated operation will always be required)
Vibration resistance	Transport application test with severity level 2 to FN 942017-4 and EN 60068-2-6
Shock resistance	Shock test with severity level 2 to FN 942017-5 and EN 60068-2-27
Corrosion resistance class CRC	2 - Moderate corrosion stress
LABS (PWIS) conformity	VDMA24364-B1/B2-L
Cleanroom class	Class 6 according to ISO 14644-1
Media temperature	-5 °C...40 °C
Ambient temperature	-5 °C...40 °C
Product weight	120 g
Electrical connection	2-pin Plugs
Type of mounting	On PR rail
Pneumatic connection, port 11	Sub-base
Pneumatic connection, port 2	G1/8
Pneumatic port 33	Sub-base
Note on materials	RoHS-compliant
Material seals	HNBR NBR
Material housing	Die-cast zinc, coated
Material screws	Galvanised steel