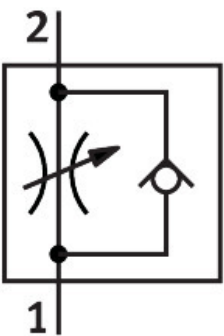


One-way flow control valve GRF-PK-3X2

Part number: 4566

FESTO



Data sheet

| Feature | Value |
|--|--|
| Valve function | One-way flow control function |
| Pneumatic connection, port 1 | PK-3 |
| Pneumatic connection, port 2 | PK-3 |
| Adjustment component | Knurled screw |
| Type of mounting | With through-hole |
| Standard nominal flow rate in flow control direction | 45 l/min |
| Standard nominal flow rate in blocked direction | 45 l/min |
| Operating pressure | 0.5 bar...8 bar |
| Ambient temperature | -10 °C...60 °C |
| Material housing | Wrought aluminium alloy |
| Mounting position | optional |
| Operating medium | Compressed air to ISO 8573-1:2010 [7:::] |
| Note on operating and pilot medium | Lubricated operation possible (in which case lubricated operation will always be required) |
| LABS (PWIS) conformity | VDMA24364-B1/B2-L |
| Media temperature | -10 °C...60 °C |
| Product weight | 145 g |
| Material adjusting screw | Brass |