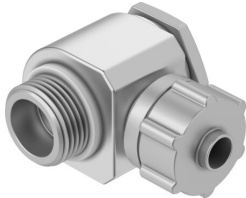


Elbow quick connector LCK-1/4-PK-6

Part number: 4472

FESTO



Data sheet

| Feature | Value |
|---|--|
| Nominal size | 4.9 mm |
| Type of seal on screwed plug | Sealing ring |
| Mounting position | optional |
| Design | L-shape |
| Size of pack | 10 |
| Operating pressure complete temperature range | -0.095 MPa...1 MPa -0.95 bar...10 bar -13.775 psi...145 psi |
| Operating medium | Compressed air to ISO 8573-1:2010 [7:-:-] |
| Note on operating and pilot medium | Lubricated operation possible |
| Corrosion resistance class CRC | 1 - Low corrosion stress |
| LABS (PWIS) conformity | VDMA24364-B1/B2-L |
| Ambient temperature | -10 °C...60 °C |
| Nominal torque | 11 Nm |
| Tolerance for nominal tightening torque | ± 10% |
| Pneumatic connection, port 1 | Male thread G1/4 |
| Pneumatic connection, port 2 | For tubing outside diameter of 8 mm For barbed fitting inside diameter of 6 mm with nut |
| Material union nut | Wrought aluminium alloy, anodised |
| Note on materials | RoHS-compliant |
| Material sealing ring | Reinforced PA TPE-U(PU) |
| Material hollow bolt | Wrought aluminium alloy, anodised |
| Material swivel fitting | Die-cast zinc |