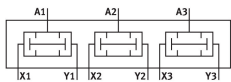
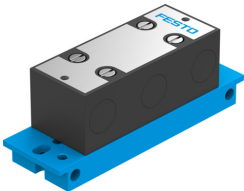


# **AND block** **ZK-PK-3-6/3** Part number: 4204



## **Data sheet**

Feature	Value
Valve function	AND function
Pneumatic connection, port 1	PK-3
Pneumatic connection, port 2	PK-3
Type of mounting	Front panel mounting
Standard nominal flow rate (standardised to DIN 1343)	100 l/min
Operating pressure	1.6 bar...8 bar
Ambient temperature	-10 °C...60 °C
Material housing	POM
Operating medium	Compressed air to ISO 8573-1:2010 [7:-:-]
Explosion protection	The information in the certificate must be observed! Zone 1 (ATEX) Zone 2 (ATEX) Zone 21 (ATEX) Zone 22 (ATEX)
Nominal size	2.5 mm
Mounting position	optional
Note on operating and pilot medium	Lubricated operation possible (in which case lubricated operation will always be required)
LABS (PWIS) conformity	VDMA24364-B1/B2-L
Media temperature	-10 °C...60 °C
Product weight	85 g
Pneumatic connection, port 3	PK-3
Material seals	NBR