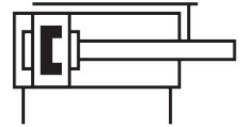
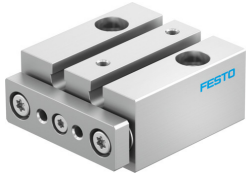


Guided drive DFM-6-20-P-A-GF

Part number: 4149947

FESTO



Data sheet

Feature	Value
Distance from centre of gravity of load to yoke plate xs	10 mm
Stroke	20 mm
Piston diameter	6 mm
Operating mode, drive unit	Yoke
Cushioning	Elastic cushioning rings/plates at both ends
Mounting position	optional
Guide	Plain-bearing guide
Design	Guidance
Position detection	Via proximity switch
Operating pressure	0.2 MPa...0.8 MPa 2 bar...8 bar
Max. speed	1.3 m/s
Mode of operation	Double-acting
Operating medium	Compressed air to ISO 8573-1:2010 [7:4:4]
Note on operating and pilot medium	Lubricated operation possible (in which case lubricated operation will always be required)
Corrosion resistance class CRC	1 - Low corrosion stress
LABS (PWIS) conformity	VDMA24364-B1/B2-L
Cleanroom class	Class 7 according to ISO 14644-1
Ambient temperature	-10 °C...60 °C
Impact energy in end positions	0.012 Nm
Max. permissible torque load Mx as a function of stroke	0.006 Nm
Max. effective load dependent upon stroke at defined distance xs	0.5 N
Theoretical force at 0.6 MPa (6 bar, 87 psi), return stroke	13 N
Theoretical force at 0.6 MPa (6 bar, 87 psi), advance stroke	17 N
Torsional backlash	0.1 deg
Moving mass	13 g
Product weight	45 g
Pneumatic connection	M3
Note on materials	RoHS-compliant
Material cover	High-alloy stainless steel
Material seals	NBR

Feature	Value
Material dynamic seals	HNBR
Material end plate	Anodised wrought aluminium alloy
Material guide rod	High-alloy stainless steel
Material housing	Anodised wrought aluminium alloy
Material piston rod	High-alloy stainless steel