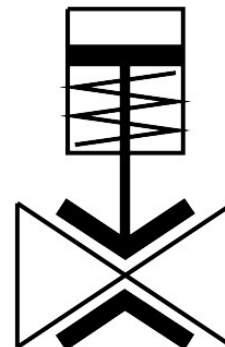


Pinch valve
VZQA-C-M22U-25-S12S12-V4V4S1-4
 Part number: 3968927

FESTO



Data sheet

| Feature | Value |
|-----------------------------|---|
| Design | Pinch valve, pneumatically actuated |
| Type of actuation | Pneumatic |
| Sealing principle | Soft |
| Mounting position | optional |
| Type of mounting | In-line installation |
| Connection Process valve | Clamp to ASME-BPE, type B |
| Nominal size DN | 25 |
| Valve function | 2/2 open, single solenoid |
| Flow direction | Reversible |
| Medium pressure | 0 MPa...0.4 MPa 0 bar...4 bar 0 psi...58 psi |
| Note on the medium pressure | Use in the vacuum range was tested up to -0.09 MPa with the air at room temperature. Depending on the application, a counter-vacuum may have to be created on the control side to guarantee the media flow. |
| Operating pressure | 0.1 MPa...0.65 MPa 1 bar...6.5 bar 14.5 psi...94.25 psi |
| Nominal pressure PN | 10 |
| Differential pressure | 0.3 MPa 3 bar 43.5 psi |
| Burst pressure | 1.6 MPa 16 bar 232 psi |
| Overload pressure | 0.78 MPa 7.8 bar 113.1 psi |
| Type of reset | Rebound resilience |
| Type of piloting | Externally controlled |

| Feature | Value |
|--|--|
| Auxiliary pilot air port 12 | G1/8 |
| Pilot medium | Compressed air to ISO 8573-1:2010 [7:4:4] |
| Medium | Compressed air to ISO 8573-1:2010 [-::-] |
| Max. viscosity | 4000 mm ² /s |
| Media temperature | -5 °C...150 °C |
| Ambient temperature | -5 °C...60 °C |
| Storage temperature | 5 °C...30 °C |
| Flow rate Kv | 18 m ³ /h |
| Switching time on | 250 ms |
| Switching time off | 250 ms |
| Note on materials | RoHS-compliant |
| LABS (PWIS) conformity | VDMA24364 zone III |
| Suitability for the production of Li-ion batteries | Product corresponds to the internal product definition from Festo for use in battery production:Metals with more than 1% by mass of copper, zinc or nickel are excluded from use.The exceptions are nickel in steel, chemically nickel-plated surfaces, printed circuit boards, cables, electrical plug connectors and coils |
| Material housing | High-alloy stainless steel |
| Material number housing | 1.4404 |
| Material housing cover | High-alloy stainless steel |
| Material seals | FPM |
| Material shut-off element | VMQ (silicone) |
| Product weight | 1516 g |
| Suitable for use with food | See declaration of conformity |
| Material bowl | PA6 |