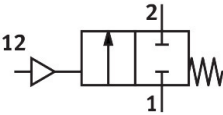
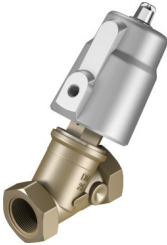


Angle seat valve

VZXF-L-M22C-M-B-G1-230-M1-H3ALT-80-16

Part number: 3540768

FESTO



Data sheet

Feature	Value
Design	Poppet valve with piston drive
Type of actuation	Pneumatic
Sealing principle	Soft
Mounting position	optional
Type of mounting	In-line installation
Line connection	Threaded coupling G1 to DIN ISO 228
Nominal size	23 mm
Valve function	2/2-way, closed, monostable
Flow direction	Non-reversible
Medium pressure	0 MPa...1.6 MPa 0 bar...16 bar
Nominal pressure PN	16
Exhaust-air function	Without flow control option
Type of reset	Mechanical spring
Type of piloting	Externally controlled
Pneumatic connection	Female thread G1/8
Operating pressure	0.6 MPa...1 MPa 6 bar...10 bar 87 psi...145 psi
Medium	Vapour Mineral oil-based hydraulic fluid Inert gases Mineral oil Water Filtered compressed air, grade of filtration 200 µm Neutral fluids
Direction of flow	Below valve seat, for gaseous and liquid media
Operating medium	Compressed air to ISO 8573-1:2010 [7:4:4]
Max. viscosity	600 mm²/s
Media temperature	-40 °C...200 °C
Ambient temperature	-10 °C...60 °C
Flow rate Kv	14.5 m³/h
Note on materials	RoHS-compliant
LABS (PWIS) conformity	VDMA24364 zone III

Feature	Value
Material process valve housing	Gunmetal (red brass)
Material number process valve housing	CC499K
Material spindle seal	PTFE
Material seat seal	PTFE
Product weight	2000 g
Corrosion resistance class CRC	0 - No corrosion stress
Material drive housing	Aluminium