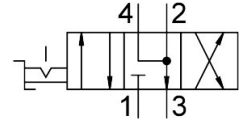
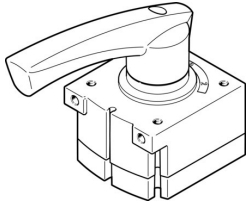


# Hand lever valve VHER-H-B43E-B-G18

Part number: 3488207

**FESTO**



## Data sheet

| Feature   | Value  |
|---|--|
| Valve function  | 4/3 exhausted  |
| Type of actuation                                     | Manual   |
| Construction width                                    | 42 mm  |
| Standard nominal flow rate (standardised to DIN 1343) | 800 l/min  |
| pneumatic working port                                | G1/8   |
| Operating pressure                                    | 0 bar...10 bar   |
| Note on operating pressure                            | Vacuum operation at connection 3 only<br>In the case of dual-pressure operation, the pressure at port 1 must be higher than at port 3. |
| Design  | Rotary gate valve  |
| Nominal size  | 6 mm   |
| Exhaust-air function                                  | With flow control option   |
| Instructions on use                                   | Actuate manually only  |
| Sealing principle                                     | Hard   |
| Type of piloting                                      | Direct   |
| Flow direction  | Non-reversible   |
| Overlap   | yes  |
| Switching position indicator                          | With accessories   |
| Operating medium                                      | Compressed air to ISO 8573-1:2010 [7:4:4]  |
| Note on operating and pilot medium                    | Lubricated operation possible (in which case lubricated operation will always be required)   |
| Corrosion resistance class CRC                        | 2 - Moderate corrosion stress  |
| LABS (PWIS) conformity                                | VDMA24364-B1/B2-L  |
| Media temperature                                     | -20 °C...80 °C   |
| Ambient temperature                                   | -20 °C...80 °C   |
| Actuating torque                                      | 0.9 Nm   |
| Product weight  | 220 g  |
| Type of mounting                                      | Front panel mounting<br>With through-hole<br>Either:   |
| Pneumatic connection, port 1                          | G1/8   |
| Pneumatic connection, port 2                          | G1/8   |
| Pneumatic connection, port 3                          | G1/8   |

| Feature                      | Value              |
|------------------------------|--------------------|
| Pneumatic connection, port 4 | G1/8               |
| Note on materials            | RoHS-compliant     |
| Material seals               | NBR                |
| Material housing             | Die-cast aluminium |
| Material lever               | Die-cast aluminium |