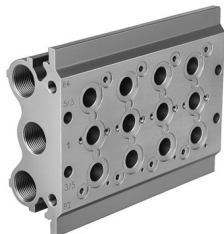


Manifold block PRS-1/8-4-BB

Part number: 30544



Data sheet

Feature	Value
Max. number of valve positions	4
LABS (PWIS) conformity	VDMA24364-B1/B2-L
Product weight	1150 g
Type of mounting	With through-hole
Pilot exhaust port 82	G1/8
Pilot exhaust port 84	G1/8
Pneumatic connection, port 1	G3/8
Pneumatic connection, port 3	G3/8
Pneumatic connection, port 5	G3/8
Note on materials	RoHS-compliant
Material sub-base	Aluminium