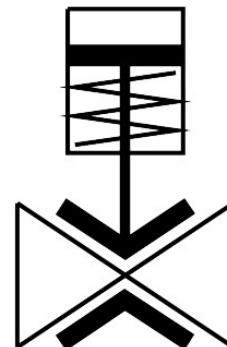


# Pinch valve

## VZQA-C-M22U-15-GG-V4V4N-4

Part number: 3022830

FESTO



## Data sheet

| Feature                     | Value                                                                                                                                                                                                       |
|-----------------------------|-------------------------------------------------------------------------------------------------------------------------------------------------------------------------------------------------------------|
| Design                      | Pinch valve, pneumatically actuated                                                                                                                                                                         |
| Type of actuation           | Pneumatic                                                                                                                                                                                                   |
| Sealing principle           | Soft                                                                                                                                                                                                        |
| Mounting position           | optional                                                                                                                                                                                                    |
| Type of mounting            | In-line installation                                                                                                                                                                                        |
| Connection Process valve    | G1/2                                                                                                                                                                                                        |
| Nominal size DN             | 15                                                                                                                                                                                                          |
| Valve function              | 2/2 open, single solenoid                                                                                                                                                                                   |
| Flow direction              | Reversible                                                                                                                                                                                                  |
| Medium pressure             | 0 MPa...0.4 MPa<br>0 bar...4 bar<br>0 psi...58 psi                                                                                                                                                          |
| Note on the medium pressure | Use in the vacuum range was tested up to -0.09 MPa with the air at room temperature. Depending on the application, a counter-vacuum may have to be created on the control side to guarantee the media flow. |
| Operating pressure          | 0.1 MPa...0.65 MPa<br>1 bar...6.5 bar<br>14.5 psi...94.25 psi                                                                                                                                               |
| Nominal pressure PN         | 10                                                                                                                                                                                                          |
| Differential pressure       | 0.25 MPa<br>2.5 bar<br>36.25 psi                                                                                                                                                                            |
| Burst pressure              | 1.6 MPa<br>16 bar<br>232 psi                                                                                                                                                                                |
| Overload pressure           | 0.78 MPa<br>7.8 bar<br>113.1 psi                                                                                                                                                                            |
| Type of reset               | Rebound resilience                                                                                                                                                                                          |
| Type of piloting            | Externally controlled                                                                                                                                                                                       |

| Feature                                            | Value                                                                                                                                                                                                                                                                                                                        |
|----------------------------------------------------|------------------------------------------------------------------------------------------------------------------------------------------------------------------------------------------------------------------------------------------------------------------------------------------------------------------------------|
| Auxiliary pilot air port 12                        | G1/8                                                                                                                                                                                                                                                                                                                         |
| Pilot medium                                       | Compressed air to ISO 8573-1:2010 [7:4:4]                                                                                                                                                                                                                                                                                    |
| Medium                                             | Compressed air to ISO 8573-1:2010 [-::-]                                                                                                                                                                                                                                                                                     |
| Max. viscosity                                     | 4000 mm <sup>2</sup> /s                                                                                                                                                                                                                                                                                                      |
| Media temperature                                  | -5 °C...60 °C                                                                                                                                                                                                                                                                                                                |
| Ambient temperature                                | -5 °C...60 °C                                                                                                                                                                                                                                                                                                                |
| Storage temperature                                | 5 °C...20 °C                                                                                                                                                                                                                                                                                                                 |
| Flow rate Kv                                       | 5 m <sup>3</sup> /h                                                                                                                                                                                                                                                                                                          |
| Switching time on                                  | 250 ms                                                                                                                                                                                                                                                                                                                       |
| Switching time off                                 | 250 ms                                                                                                                                                                                                                                                                                                                       |
| Note on materials                                  | RoHS-compliant                                                                                                                                                                                                                                                                                                               |
| LABS (PWIS) conformity                             | VDMA24364 zone III                                                                                                                                                                                                                                                                                                           |
| Suitability for the production of Li-ion batteries | Product corresponds to the internal product definition from Festo for use in battery production:Metals with more than 1% by mass of copper, zinc or nickel are excluded from use.The exceptions are nickel in steel, chemically nickel-plated surfaces, printed circuit boards, cables, electrical plug connectors and coils |
| Material housing                                   | High-alloy stainless steel                                                                                                                                                                                                                                                                                                   |
| Material number housing                            | 1.4404                                                                                                                                                                                                                                                                                                                       |
| Material housing cover                             | High-alloy stainless steel                                                                                                                                                                                                                                                                                                   |
| Material seals                                     | FPM                                                                                                                                                                                                                                                                                                                          |
| Material shut-off element                          | NBR                                                                                                                                                                                                                                                                                                                          |
| Product weight                                     | 431 g                                                                                                                                                                                                                                                                                                                        |
| Material bowl                                      | PA6                                                                                                                                                                                                                                                                                                                          |