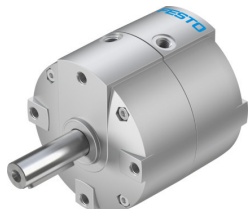


Semi-rotary drive DRVS-40-180-P-EX4

Part number: 2536500

FESTO



Data sheet

Feature	Value
Size	40
Cushioning angle	0.5 deg
Swivel angle	0 deg...180 deg
Permissible stop radius	40 mm
Cushioning	Elastic cushioning rings/plates at both ends
Mounting position	optional
Mode of operation	Double-acting
Design	Vane
Position detection	Via proximity switch
Variants	Spigot shaft
Operating pressure	0.2 MPa...0.8 MPa 2 bar...8 bar
Max. swivel frequency at 0.6 MPa (6 bar, 87 psi)	3 Hz
Repetition accuracy	1 deg
CE mark (see declaration of conformity)	To EU Explosion Protection Directive (ATEX)
UKCA marking (see declaration of conformity)	To UK EX instructions
Explosion protection certification outside the EU	EPL Db (GB) EPL Gb (GB)
Explosion protection	Zone 1 (ATEX) Zone 1 (UKEX) Zone 2 (ATEX) Zone 21 (ATEX) Zone 21 (UKEX) Zone 22 (ATEX)
ATEX category gas	II 2G
ATEX category dust	II 2D
Explosion ignition protection type for gas	Ex h IIC T4 Gb X
Explosion ignition protection type for dust	Ex h IIIC T120°C Db X
Explosion ambient temperature	0 °C <= Ta <= +60 °C
Operating medium	Compressed air to ISO 8573-1:2010 [7:4:4]
Note on operating and pilot medium	Lubricated operation possible (in which case lubricated operation will always be required)
Corrosion resistance class CRC	1 - Low corrosion stress

Feature	Value
LABS (PWIS) conformity	VDMA24364-B2-L
Suitability for the production of Li-ion batteries	Product corresponds to the internal product definition from Festo for use in battery production:Metals with more than 1% by mass of copper, zinc or nickel are excluded from use.The exceptions are nickel in steel, chemically nickel-plated surfaces, printed circuit boards, cables, electrical plug connectors and coils
Ambient temperature	0 °C...60 °C
Max. stop force	650 N
Max. axial force	120 N
Max. radial force	350 N
Theoretical torque at 0.6 MPa (6 bar, 87 psi)	20 Nm
Permissible mass moment of inertia	0.035 kgm ²
Product weight	1500 g
Type of mounting	Via female thread
Pneumatic connection	G1/8
Note on materials	RoHS-compliant
Material drive shaft	Nickel-plated steel
Material seals	TPE-U(PU)
Material housing	Painted die cast aluminium