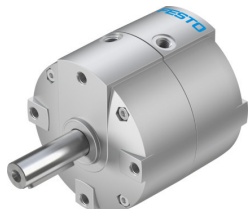


Semi-rotary drive DRVS-40-90-P-EX4

Part number: 2536499

FESTO



Data sheet

| Feature | Value |
|---|---|
| Size | 40 |
| Cushioning angle | 0.5 deg |
| Swivel angle | 0 deg...90 deg |
| Permissible stop radius | 40 mm |
| Cushioning | Elastic cushioning rings/plates at both ends |
| Mounting position | optional |
| Mode of operation | Double-acting |
| Design | Vane |
| Position detection | Via proximity switch |
| Variants | Spigot shaft |
| Operating pressure | 0.2 MPa...0.8 MPa 2 bar...8 bar |
| Max. swivel frequency at 0.6 MPa (6 bar, 87 psi) | 3 Hz |
| Repetition accuracy | 1 deg |
| CE mark (see declaration of conformity) | To EU Explosion Protection Directive (ATEX) |
| UKCA marking (see declaration of conformity) | To UK EX instructions |
| Explosion protection certification outside the EU | EPL Db (GB) EPL Gb (GB) |
| Explosion protection | Zone 1 (ATEX) Zone 1 (UKEX) Zone 2 (ATEX) Zone 21 (ATEX) Zone 21 (UKEX) Zone 22 (ATEX) |
| ATEX category gas | II 2G |
| ATEX category dust | II 2D |
| Explosion ignition protection type for gas | Ex h IIC T4 Gb X |
| Explosion ignition protection type for dust | Ex h IIIC T120°C Db X |
| Explosion ambient temperature | 0 °C <= Ta <= +60 °C |
| Operating medium | Compressed air to ISO 8573-1:2010 [7:4:4] |
| Note on operating and pilot medium | Lubricated operation possible (in which case lubricated operation will always be required) |
| Corrosion resistance class CRC | 1 - Low corrosion stress |

| Feature | Value |
|--|--|
| LABS (PWIS) conformity | VDMA24364-B2-L |
| Suitability for the production of Li-ion batteries | Product corresponds to the internal product definition from Festo for use in battery production:Metals with more than 1% by mass of copper, zinc or nickel are excluded from use.The exceptions are nickel in steel, chemically nickel-plated surfaces, printed circuit boards, cables, electrical plug connectors and coils |
| Ambient temperature | 0 °C...60 °C |
| Max. stop force | 650 N |
| Max. axial force | 120 N |
| Max. radial force | 350 N |
| Theoretical torque at 0.6 MPa (6 bar, 87 psi) | 20 Nm |
| Permissible mass moment of inertia | 0.035 kgm ² |
| Product weight | 1530 g |
| Type of mounting | Via female thread |
| Pneumatic connection | G1/8 |
| Note on materials | RoHS-compliant |
| Material drive shaft | Nickel-plated steel |
| Material seals | TPE-U(PU) |
| Material housing | Painted die cast aluminium |