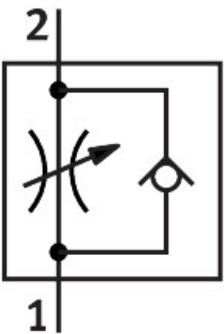


One-way flow control valve GR-3/4

Part number: 2103

FESTO



Data sheet

Feature	Value
Valve function	One-way flow control function
Pneumatic connection, port 1	G3/4
Pneumatic connection, port 2	G3/4
Adjustment component	Knurled screw
Type of mounting	Front panel mounting With through-hole
Standard nominal flow rate in flow control direction	3300 l/min
Standard nominal flow rate in blocked direction	4800 l/min
Operating pressure	0.3 bar...15 bar
Ambient temperature	-10 °C...60 °C
Material housing	Wrought aluminium alloy
Explosion protection	The information in the certificate must be observed! Zone 1 (ATEX) Zone 2 (ATEX) Zone 21 (ATEX) Zone 22 (ATEX)
Mounting position	optional
Operating medium	Compressed air to ISO 8573-1:2010 [7:-:-]
Note on operating and pilot medium	Lubricated operation possible (in which case lubricated operation will always be required)
LABS (PWIS) conformity	VDMA24364-B1/B2-L
Media temperature	-10 °C...60 °C
Product weight	938 g
Note on materials	RoHS-compliant