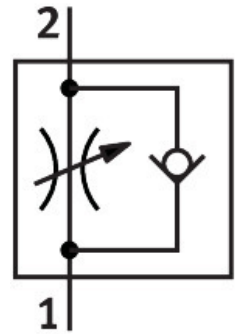


One-way flow control valve GRLA-M5-QS-4-RS-D

Part number: 197577

FESTO



Data sheet

Feature	Value
Valve function	Exhaust air one-way flow control function
Pneumatic connection, port 1	QS-4
Pneumatic connection, port 2	M5
Adjustment component	Knurled screw
Type of mounting	Screw-in
Standard nominal flow rate in flow control direction	110 l/min
Standard nominal flow rate in blocked direction	65 l/min...110 l/min
Operating pressure	0.2 bar...10 bar
Ambient temperature	-10 °C...60 °C
Maritime classification	See certificate
Mounting position	optional
Operating pressure complete temperature range	0.2 bar...10 bar
Standard flow rate in flow control direction 0.6->0 MPa (6->0 bar, 87->0 psi)	165 l/min
Standard flow rate in non-return direction 0.6->0 MPa (6->0 bar, 87->0 psi)	140 l/min...160 l/min
Operating medium	Compressed air to ISO 8573-1:2010 [7:4:4]
Note on operating and pilot medium	Lubricated operation possible (in which case lubricated operation will always be required)
LABS (PWIS) conformity	VDMA24364-B1/B2-L
Cleanroom class	Class 4 according to ISO 14644-1
Media temperature	-10 °C...60 °C
Nominal torque	0.8 Nm
Product weight	14 g
Material screwed plug	Brass
Note on materials	RoHS-compliant
Material seals	NBR

Feature	Value
Material release ring	POM
Material adjusting screw	High-alloy stainless steel
Material swivel fitting	Die-cast zinc Chromated