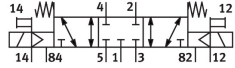
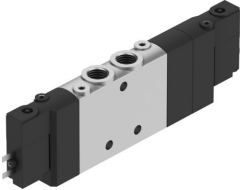


Solenoid valve

CPE14-M1BH-5/3GS-1/8

Part number: 196938

FESTO



Data sheet

| Feature | Value |
|---|--|
| Valve function | 5/3 closed |
| Type of actuation | Electric |
| Construction width | 14 mm |
| Standard nominal flow rate (standardised to DIN 1343) | 750 l/min |
| pneumatic working port | G1/8 |
| Operating voltage | 24V DC |
| Operating pressure | -0.09 MPa...1 MPa -0.9 bar...10 bar |
| Design | Piston gate valve |
| Type of reset | Mechanical spring |
| Approval | c UL us - Recognized (OL) |
| Maritime classification | See certificate |
| Certificate issuing authority | DNV-TAA000032X UL MH19482 |
| Degree of protection | IP65 With plug socket To IEC 60529 |
| Nominal size | 6 mm |
| Exhaust-air function | With flow control option |
| Sealing principle | Soft |
| Mounting position | optional |
| Manual override | Detenting via accessory Non-detenting |
| Type of piloting | Pilot actuated |
| Pilot air supply | External |
| Flow direction | Reversible |
| Valve position code | Inscription label holder |
| lap | Overlap |
| Pilot pressure | 0.3 MPa...0.8 MPa 3 bar...8 bar |
| Switching time off | 42 ms |
| Switching time on | 20 ms |
| Duty cycle | 100% in conjunction with holding current reduction |

| Feature | Value |
|--|--|
| Max. positive test pulse with 0 signal | 1200 µs |
| Max. negative test pulse with 1 signal | 900 µs |
| Characteristic coil data | 24 V DC: 1.28 W |
| Permissible voltage fluctuations | -15%/+10% |
| Operating medium | Compressed air to ISO 8573-1:2010 [7:4:4] |
| Note on operating and pilot medium | Lubricated operation possible (in which case lubricated operation will always be required) |
| Vibration resistance | Transport application test with severity level 2 to FN 942017-4 and EN 60068-2-6 |
| Shock resistance | Shock test with severity level 2 to FN 942017-5 and EN 60068-2-27 |
| Corrosion resistance class CRC | 2 - Moderate corrosion stress |
| LABS (PWIS) conformity | VDMA24364-B1/B2-L |
| Media temperature | -5 °C...50 °C |
| Pilot medium | Compressed air to ISO 8573-1:2010 [7:4:4] |
| Ambient temperature | -5 °C...50 °C |
| Product weight | 120 g |
| Electrical connection | 2-pin |
| Type of mounting | With through-hole |
| Pilot exhaust port 82 | M3 |
| Pilot exhaust port 84 | M3 |
| Pilot air port 12 | M3 |
| Pilot air port 14 | M3 |
| Pneumatic connection, port 1 | G1/8 |
| Pneumatic connection, port 2 | G1/8 |
| Pneumatic connection, port 3 | G1/8 |
| Pneumatic connection, port 4 | G1/8 |
| Pneumatic connection, port 5 | G1/8 |
| Note on materials | RoHS-compliant |
| Material seals | NBR |
| Material housing | Die-cast aluminium |