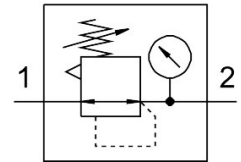


Pressure regulator LRS-1/2-D-7-MIDI

Part number: 194646

FESTO



Data sheet

Feature	Value
Size	Midi
Series	D
Actuator lock	Rotary knob with integrated lock
Mounting position	optional
Design	Directly actuated diaphragm regulator
Controller function	Output pressure constant Via primary pressure compensation With secondary venting
Pressure gauge (ANALOG) or Pressure display (DIGITAL)	With pressure gauge
Operating pressure	0 MPa...1.6 MPa 0 bar...16 bar
Pressure regulation range	0.5 bar...7 bar
Max. pressure hysteresis	0.02 MPa 0.2 bar 2.9 psi
Standard nominal flow rate (standardised to DIN 1343)	4000 l/min
Operating medium	Compressed air to ISO 8573-1:2010 [7:4:4] Inert gases
Note on operating and pilot medium	Lubricated operation possible (in which case lubricated operation will always be required)
Corrosion resistance class CRC	2 - Moderate corrosion stress
LABS (PWIS) conformity	VDMA24364-B1/B2-L
Air purity class at output	Compressed air to ISO 8573-1:2010 [7:4:4] Inert gases
Media temperature	-10 °C...60 °C
Ambient temperature	-10 °C...60 °C
Product weight	1250 g
Type of mounting	Front panel mounting In-line installation With accessories
Pneumatic connection, port 1	G1/2
Pneumatic connection, port 2	G1/2
Note on materials	RoHS-compliant
Material sub-base	Die-cast zinc

Feature	Value
Material seals	NBR
Material housing	Die-cast zinc