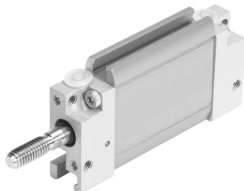


Flat cylinder
DZF-1/2"-6"-A-P-A
Part number: 194120

FESTO



Data sheet

Feature	Value
Stroke	6 in
Piston diameter	1/2"
Torsional backlash at piston rod +/-	2.5 deg
Cushioning	Elastic cushioning rings/plates at both ends
Mode of operation	Double-acting
Protection against torque/guide	Oval piston
Operating pressure	0.16 MPa...1 MPa 1.6 bar...10 bar
Operating medium	Compressed air to ISO 8573-1:2010 [7:4:4]
Note on operating and pilot medium	Lubricated operation possible (in which case lubricated operation will always be required)
Corrosion resistance class CRC	2 - Moderate corrosion stress
LABS (PWIS) conformity	VDMA24364-B1/B2-L
Ambient temperature	-20 °C...80 °C
Theoretical force at 0.6 MPa (6 bar, 87 psi), return stroke	51 N
Theoretical force at 0.6 MPa (6 bar, 87 psi), advance stroke	68 N
Moving mass for 0 mm stroke	12 g
Additional weight per 10 mm stroke	2 g
Basic weight for 0 mm stroke	96 g
Pneumatic connection	10-32 UNF-2B
Material cover	Aluminium
Material seals	FPM TPE-U(PU)
Material housing	Wrought aluminium alloy
Material piston rod	High-alloy stainless steel