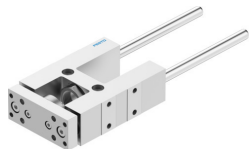


Guide unit FEN-25- -GF

Part number: 19170

FESTO



Data sheet

Feature	Value
Size	25
Stroke	2 mm...250 mm
Mounting position	optional
Guide	Plain-bearing guide
Design	Guidance
Explosion protection	The information in the certificate must be observed!
LABS (PWIS) conformity	VDMA24364-B2-L
Ambient temperature	-20 °C...80 °C
Displacement force	15 N
Additional moving mass per 10 mm stroke	12 g
Basic weight for 0 mm stroke	866 g
Additional weight per 10 mm stroke	12 g
Centre of gravity at 0 mm stroke	42 mm
Centre of gravity additional of moving mass per 10 mm	4.7 mm
Type of mounting	Via female thread
Note on materials	RoHS-compliant
Material guide component	High-alloy steel
Material housing	Anodised wrought aluminium alloy
Material yoke plate	Anodised wrought aluminium alloy