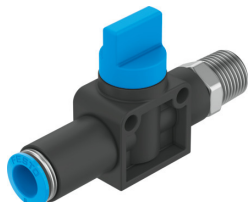


Shut-off valve HE-3A-1/8-QS-3/16-U

Part number: 190871

FESTO



Data sheet

| Feature | Value |
|---|--|
| Valve function | 3/2 double solenoid |
| Selection of additional functions | With exhaust function |
| Pneumatic connection, port 1 | QS-3/16 |
| Pneumatic connection, port 2 | 1/8 NPT |
| Type of actuation | Manual |
| Type of mounting | Direct mounting via through-hole Direct mounting via thread Either: |
| Standard nominal flow rate (standardised to DIN 1343) | 195.3 l/min |
| Nominal size | 2.5 mm |
| Operating pressure | -0.095 MPa...1 MPa -0.95 bar...10 bar |
| Ambient temperature | 0 °C...60 °C |
| Material housing | PBT-reinforced |
| Operating medium | Compressed air to ISO 8573-1:2010 [7:-:-] |
| Exhaust-air function | Without flow control option |
| Sealing principle | Soft |
| Mounting position | optional |
| Design | Piston gate valve |
| Type of piloting | Direct |
| Flow direction | Non-reversible |
| Note on operating and pilot medium | Lubricated operation possible (in which case lubricated operation will always be required) |
| Corrosion resistance class CRC | 2 - Moderate corrosion stress |
| LABS (PWIS) conformity | VDMA24364-B2-L |
| Cleanroom class | Class 4 according to ISO 14644-1 |
| Media temperature | 0 °C...60 °C |
| Product weight | 30 g |
| Pneumatic connection, port 3 | Not ducted |
| Note on materials | RoHS-compliant |
| Material seals | NBR |