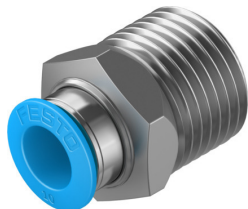


Push-in fitting QS-1/2-10

Part number: 190646

FESTO



Data sheet

Feature	Value
Size	Standard
Nominal size	9 mm
Type of seal on screwed plug	Coating
Mounting position	optional
Design	Straight design Push-pull principle
Size of pack	1
Operating pressure complete temperature range	-0.095 MPa...0.6 MPa -0.95 bar...6 bar -13.775 psi...87 psi
Temperature-dependent operating pressure	-0.095 MPa...1.4 MPa -0.95 bar...14 bar -13.775 psi...203 psi
Note on operating pressure	Water: max. 0.6 MPa at max. 50°C
Operating medium	Compressed air to ISO 8573-1:2010 [7:::] Water (liquid, ice-free)
Note on operating and pilot medium	Lubricated operation possible
Corrosion resistance class CRC	1 - Low corrosion stress
LABS (PWIS) conformity	VDMA24364-B1/B2-L
Ambient temperature	-10 °C...80 °C
Nominal torque	26 Nm
Tolerance for nominal tightening torque	± 20%
Product weight	46 g
Type of mounting	External hexagon, size 21 mm
Pneumatic connection, port 1	Male thread R1/2
Pneumatic connection, port 2	For tubing outside diameter of 10 mm
Colour of release ring	Blue
Note on materials	RoHS-compliant
Material housing	Brass, nickel-plated
Material release ring	POM
Material tubing seal	NBR
Material tubing clamp component	High-alloy stainless steel