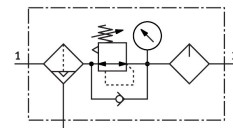


# Service unit FRC-1/2-D-5M-MAXI-A

Part number: 186510

FESTO



## Data sheet

| Feature   | Value  |
|---|--|
| Size  | Maxi   |
| Series  | D  |
| Actuator lock   | Rotary knob with detent  |
| Mounting position                                     | Vertical +/- 5°  |
| Condensate drain                                      | Fully automatic  |
| Design  | Filter regulator with pressure gauge<br>Proportional standard mist lubricator              |
| Max. condensate volume                                | 80 cm <sup>3</sup>   |
| Grade of filtration                                   | 5 µm   |
| Bowl guard  | Metal bowl guard   |
| Pressure gauge (ANALOG) or Pressure display (DIGITAL) | With pressure gauge  |
| Operating pressure                                    | 0.2 MPa...1.2 MPa<br>2 bar...12 bar  |
| Pressure regulation range                             | 0.5 bar...12 bar   |
| Max. pressure hysteresis                              | 0.04 MPa<br>0.4 bar<br>5.8 psi   |
| Standard nominal flow rate (standardised to DIN 1343) | 6800 l/min   |
| Operating medium                                      | Compressed air to ISO 8573-1:2010 [7:9:-]<br>Inert gases                                   |
| Note on operating and pilot medium                    | Lubricated operation possible (in which case lubricated operation will always be required) |
| Corrosion resistance class CRC                        | 2 - Moderate corrosion stress  |
| LABS (PWIS) conformity                                | VDMA24364-B1/B2-L  |
| Air purity class at output                            | Compressed air to ISO 8573-1:2010 [6:8:-]<br>Inert gases                                   |
| Media temperature                                     | -10 °C...60 °C   |
| Ambient temperature                                   | -10 °C...60 °C   |
| Product weight  | 2390 g   |
| Type of mounting                                      | In-line installation<br>With accessories   |
| Pneumatic connection, port 1                          | G1/2   |
| Pneumatic connection, port 2                          | G1/2   |
| Note on materials                                     | RoHS-compliant   |

| Feature          | Value         |
|------------------|---------------|
| Material housing | Die-cast zinc |
| Material bowl    | PC            |