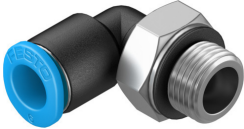


# Push-in L-fitting QSML-G1/8-6

Part number: 186269

**FESTO**



## Data sheet

Feature	Value
Size	Mini
Nominal size	3.3 mm
Type of seal on screwed plug	Sealing ring
Mounting position	optional
Design	L-shape Push-pull principle
Size of pack	10
Operating pressure complete temperature range	-0.095 MPa...0.6 MPa -0.95 bar...6 bar -13.775 psi...87 psi
Temperature-dependent operating pressure	-0.095 MPa...1.4 MPa -0.95 bar...14 bar -13.775 psi...203 psi
Operating medium	Compressed air to ISO 8573-1:2010 [7:...]
Note on operating and pilot medium	Lubricated operation possible
Corrosion resistance class CRC	1 - Low corrosion stress
LABS (PWIS) conformity	VDMA24364-B1/B2-L
Ambient temperature	-10 °C...80 °C
Nominal torque	5.4 Nm
Tolerance for nominal tightening torque	± 20%
Product weight	9.7 g
Type of mounting	External hexagon, A/F 13 mm
Pneumatic connection, port 1	Male thread G1/8
Pneumatic connection, port 2	For tubing outside diameter of 6 mm
Colour of release ring	Blue
Material screwed plug	Nickel-plated brass
Note on materials	RoHS-compliant
Material housing	PBT
Material release ring	POM
Material tubing seal	NBR
Material tubing clamp component	High-alloy stainless steel